

WORKING PAPER

INAPP WP n. 50

All that glitters is not gold. Influence of working from home on income inequality at the time of Covid-19

Luca Bonacini

Giovanni Gallo

Sergio Scicchitano

All that glitters is not gold. Influence of working from home on income inequality at the time of Covid-19

Luca Bonacini

Università degli studi di Modena e Reggio Emilia (UNIMORE), Modena, Reggio Emilia
luca.bonacini@unimore.it

Giovanni Gallo

Università degli studi di Modena e Reggio Emilia, (UNIMORE), Modena, Reggio Emilia
Istituto nazionale per l'analisi delle politiche pubbliche (INAPP), Roma
gi.gallo.ext@inapp.org

Sergio Scicchitano

Istituto nazionale per l'analisi delle politiche pubbliche (INAPP), Roma
s.scicchitano@inapp.org

GIUGNO 2020

We thank Gaetano Basso Irene Brunetti, and Mauro Caselli for useful comments. The views expressed in this paper are those of the authors and do not necessarily reflect those of INAPP.

CONTENTS: 1. Introduction. – 2. Data. – 3. Methodology and model specifications. – 4. Results; 4.1 Descriptive evidences; 4.2 Kolmogorov-Smirnov test; 4.3 Influences of occupations attitude towards working from home. – 5. Robustness checks. – 6. Conclusions. – Appendix. – References

INAPP – Istituto nazionale per l'analisi delle politiche pubbliche

Corso d'Italia 33
00198 Roma, Italia

Tel. +39 06854471
Email: urp@inapp.org

www.inapp.org

ABSTRACT

All that glitters is not gold. Influence of working from home on income inequality at the time of Covid-19

The recent global Covid-19 pandemic forced most of governments in developed countries to introduce severe measures limiting people mobility freedom in order to contain the infection spread. Consequently, working from home (WFH) procedures became of great importance for a large part of employees, since they represent the only option to both continue working and keep staying home. Based on influence function regression methods, our paper explores the role of WFH attitude across labour income distribution in Italy. Results show that increasing WFH attitudes of occupations would lead to a rise of wage inequality among Italian employees. Specifically, a change from low to high WFH attitude would determine a 10% wage premium on average and even higher premiums (+17%) in top deciles of wage distribution. A possible improvement of occupations WFH attitude tends to benefit male, older and high-paid employees, as well as those living in provinces more affected by the novel coronavirus.

KEYWORDS: Covid-19, working from home, inequality, unconditional quantile regressions

JEL CODES: D31, I18, J16

“That push [related to reopening decisions during the pandemic] is likely to exacerbate longstanding inequalities, with workers who are college educated, relatively affluent and primarily white able to continue working from home and minimizing outdoor excursions to reduce the risk of contracting the virus”

The New York Times, April 27 2020¹

1. Introduction

The Covid-19 pandemic is raging worldwide, and it probably does not run out in the short term, thus causing possible structural effects on the labour market in many countries (Baert *et al.* 2020a). The contagion speed of the coronavirus seems to be also favoured by globalization (Zimmermann *et al.* 2020). Most of governments in developed countries responded by suspending many economic activities and limiting people mobility freedom (Baldwin and Weder di Mauro 2020; Qiu *et al.* 2020; Flaxman *et al.* 2020). In this context, the working from home (WFH) procedures became of great importance, since they allow to continue working and thus receiving wages (as for employees), to keep producing services and revenues (as for employers), and to overall limit the infection spread risk and pandemic recessive impacts in the country. Due to the uncertainty about the actual pandemic duration or future contagion waves, the role of WFH in the labour market is further emphasized by the fact that it might become a traditional (rather than unconventional) way of working in many economic sectors (Alon *et al.* 2020). It has been recently found that the great majority of the employees in Belgium believe that teleworking (85%) and digital conferencing (81%) will continue after the SARS-CoV-2 crisis (Baert *et al.* 2020b).

Because of its sudden prominence growth, several studies recently investigated the WFH phenomenon. Most of these studies (see, for instance, Béland *et al.* 2020; Dingel and Neiman 2020; Gottlieb *et al.* 2020; Hensvik *et al.* 2020; Holgersen *et al.* 2020; Koren and Peto 2020; Leibovici *et al.* 2020; Yasenov 2020) aim to classify occupations according to their WFH attitude in the US and some European countries (e.g. UK, Germany) and in Latin American and Caribbean countries (Delaporte and Peña 2020). As for Italy Boeri *et al.* (2020), starting from the U.S. O*NET dataset, estimate that 24% of jobs can be carried out from home, while Barbieri *et al.* (2020) build an indicator of the WFH attitude for sectors and occupations. Just few of them instead deepen on employees' characteristics, showing that WFH attitude in the US, UK and Germany is lower among less educated and overall low-paid workers (Adams-Prassl *et al.* 2020; Mongey *et al.* 2020)². However, the literature still neglects potential effects of WFH along the wage distribution and on income inequality in general.

This paper aims to provide some first insights on the role of WFH on labour income inequality. Specifically, using the influence function regression method proposed by Firpo *et al.* (2009), we

¹ See: <https://rb.gy/3qzyj0>.

² Working from home has already been studied in normal times (e.g. Blinder and Krueger 2013; Bloom *et al.* 2015). Some articles evaluated the effect of flexible work practices on wages (Weeden 2005; Gariety and Shaer 2007; Leslie *et al.* 2012; Arntz *et al.* 2019; Pablonia and Vernon 2020). Pigini and Staffolani (2019) estimate the average wage premium of telework in Italy. Angelici and Profeta (2020) in a randomized experiment among Italian workers show that flexibility of working from home can reduce gender disparities.

estimate the unconditional effect along the wage distribution of a marginal change in the WFH attitude. To do that, we focus on Italy as an interesting case study, because both it is one of the countries most affected by the novel coronavirus and it was the first Western country to adopt a lockdown of economic activities (on March 25). Barbieri *et al.* (2020) estimated that further 3 million of employees (i.e. about 13% of total) started to work from home because of this companies-lockdown, but a large part started even earlier because of both the schools-lockdown (on March 5) and the national quarantine (on March 12) (more details in Bonacini *et al.* 2020).

We use a uniquely detailed dataset relying on the merge of two sample surveys. The first one is the Survey on Labour Participation and Unemployment (i.e. Inapp PLUS) for the year 2018, which contains information on incomes, education level, and employment conditions of working age Italians. The second sample survey is the Italian Survey of Professions (ICP) for the year 2013, which provides detailed information of the task-content of occupations at the 5-digit ISCO classification level. ICP is the Italian equivalent of the US O*NET repertoire and it allows us to build the WFH attitude index recently proposed by Barbieri *et al.* (2020). With respect to Boeri *et al.* (2020) who report the number of employees suitable for working from home in Italy, a key point of our data is therefore that our task and skill variables directly refer to the Italian labour market. Finally, we merge our dataset to the one provided by the Italian Civil Protection Department (2020) for the period February 24-May 5 2020 to investigate to what extent the WFH attitude influence on labour income distribution is higher in provinces most affected by the novel coronavirus.

2. Data

Data we use in this article are from an innovative dataset recently built by merging two Italian surveys, developed and administered by the National Institute for Public Policy Analysis (Inapp). The first one is the Participation, Labour and Unemployment Survey (PLUS), which is able to provide reliable statistical estimates of labour market phenomena that are rare or marginally explored by the Labour Force Survey. It also provides a wide range of standard individual characteristics, as well as numerous characteristics related to his job and firm, for approximately 45,000 individuals in each wave. We use the last Eighth wave of the Survey, which was collected in 2018 and released in the first half of 2019. A dynamic computer-assisted telephone interview (i.e. a CATI interview) was used to contact participants. One of the key elements of this dataset is the absence of proxy interviews: in the survey, only survey respondents are reported, to reduce measurement errors and partial non-responses. The questionnaire was distributed to a sample of residents aged between 18 and 74 according to a stratified random sampling over the Italian population³. The Inapp PLUS survey also provides individual weights to account for non-response and attrition issues which usually affect sample surveys. Similarly to other empirical studies relying on the same dataset (see, among others, Clementi and Giammatteo 2014; Filippetti *et al.* 2019; Meliciani and Radicchia 2011, 2016; Van Wolleghem *et*

³ The stratification of the Inapp PLUS survey sample is based on population strata by NUTS-2 Region of residence, urbanisation degree (i.e., metropolitan or non-metropolitan area), age group, sex, and employment status (i.e., employed, unemployed, student, retired, or other inactive status).

al. 2019; Esposito and Scicchitano 2020), all descriptive statistics and estimates reported in this analysis are weighted using those individual weights.

The second one is the 2013 wave of the Italian Sample Survey on Professions (ICP), created in 2004 and currently carried out by Inapp. The ICP integrates the traditional approach by focusing on nature and content of the work. It aims to describe, with a high analytical detail, all existing professions both in terms of requirements and characteristics required of the worker, both in terms of activities and working conditions that the profession implies. It was chosen to involve workers rather than experts, privileging the point of view of those who exercise daily professions under study and have a direct and concrete assessment of the level of use of certain characteristics essential to carry out one's job. The survey reports information on about 16,000 workers and describes all the 5-digit occupations (i.e. 811 occupational codes) existing in the Italian labour market, from those operating in private companies to those present within the institutions and public structures, up to those operating under autonomy. The conceptual reference framework for the investigation and the taxonomies of variables used are borrowed from the US model of the Occupational Information Network, O*Net. It is the most complete from the point of view of the job description, being also able to respond simply and comprehensively to potentials stakeholder questions. Thus the questions refer to the US O*Net conceptual model, according to which the profession is a multi-dimensional concept that can be described referring to the following thematic areas: a) worker requirements: skills, knowledge, educational level; b) worker characteristics: skills, values, working styles; c) profession requirements: generalized work activities, working context; d) experience requirements: training, experience. Remarkably, Italy is one of the few European countries to have a dictionary of occupations similar to the US O*NET. Thus, being the ICP based on Italian occupations and not on those of the US, it is able to capture the specific features of the Italian productive structure, which the O*NET is not able to grasp thus avoiding potential biases. The existing literature (Boeri *et al.* 2020) use instead US O*Net data and crosswalks between US and Italy, which possibly reflect US-specific technology adoption and labour market structure.

The ICP survey includes questions that are particularly relevant to evaluate the attitude to smart-working of workers in the current Covid-19 emergency. More specifically, we use WFH attitude index recently proposed by Barbieri *et al.* (2020), which is calculated for each 5-digit occupation and goes from a 0 to 100 scale (from less to more intense). The composite index is computed by taking the average of the following seven questions: (i) importance of working with computers; (ii) importance of performing general physical activities (which enters with reversely); (iii) importance of manoeuvring vehicles, mechanical vehicles or equipment (reversely); (iv) requirement of face-to-face interactions (reversely); (v) dealing with external customers or with the public (reversely); (vi) physical proximity (reversely); (vii) time spent standing (reversely). The index was aggregated at the ISCO 4-digits level to merge it with PLUS.

From the total Inapp PLUS sample, to develop our analysis, we drop people with no occupation (e.g. students, retirees, unemployed). We also drop self-employed from our sample, because of their potentially strong heterogeneity and unclarity in the usage of working from home procedures. Finally, we drop observations with missing values in relevant variables and we apply a usual age restriction, selecting only employees aged 25-64 years old. Our analysis sample of employees therefore counts 14,307 observations.

3. Methodology and model specifications

Formally, let F be the distribution function of gross labour incomes and $v(F)$ denote a distributional statistic, such as the mean or a quantile. Since we can identify two categories of employees in terms of WFH attitude, F can be expressed as

$$F(y) = s_1 F_1(y) + s_2 F_2(y) \quad (1)$$

where y is the gross labour income (i.e. the outcome variable), F_1 (F_2) is the income distribution among employees with low (high) WFH attitude, and s_1 (s_2) is the share of employees in that subgroup on the total sample.

Firpo *et al.* (2009) proposed a methodology to estimate the impact of marginal changes in the distribution of interest variables on the distributional statistic $v(F)$. Following Choe and Van Kerm (2018), we label this measure as ‘unconditional effect’ (UE). Firpo *et al.* (2009) demonstrate that $UE(v(F), 2)$ can be also expressed as

$$UE(v(F), 2) = \int RIF(y; v, F) d(G_1^{F,t,2} - F)(y) \quad (2)$$

where $G_1^{F,t,2}$ is the gross income distribution after the marginal substitution of employees, i.e. $G_1^{F,t,2} = (s_2 + t)F_2(y) + (s_1 - t)F_1(y)$, $RIF(y; v, F) = v(F) + IF(y; v, F)$ is the recentered influence function of $v(F)$ and

$$IF(y; v, F) = \lim_{t \rightarrow 0} \frac{v\left(\frac{(1-t)F + t\Delta_y}{t}\right) - v(F)}{t} \quad (3)$$

is the influence function introduced by Hampel (1974). According to Firpo *et al.* (2009), the UEs can be correctly calculated through a simple OLS estimation. Once the values of $RIF(y; v, F)$ are computed for all observations for the distributional statistic (F), they are regressed by OLS on our variable of interest. The latter is defined as a dummy taking value 1 for employees with a high level of WFH attitude, thus a value of the indicator proposed by Barbieri *et al.* (2020) over the sample median (i.e. 52.2), and 0 otherwise.

The unconditional quantile regression method also allows for taking into account demographic and economic characteristics which may differ across employees, leading to potential biases on policy influences. To this end, RIFs must be regressed through an OLS model including a vector Z of relevant covariates beyond the variable of interest. The resulting effect is labelled as ‘unconditional partial effect’ (UPE) (Firpo *et al.* 2009; Choe and Van Kerm 2018), but it is also named ‘policy effect’ (Rothe 2010; Gallo and Pagliacci 2020). UPEs are formally defined as

$$UPE(v(F), k) = \left(\int_{\Omega_z} E[IF(y; v, F)|X = k, Z = z] - E[IF(y; v, F)|X = 1, Z = z] f_Z(z) dz \right) \times t \quad (4)$$

here Ω_z denotes a set of employees given the covariates vector Z . Following Firpo *et al.* (2009), we set the ‘attitude shift’ t to 1 in order to estimate the UEs and UPEs. This means that influence estimates on labour income distribution assume that all employees reporting low levels of WFH attitude increase their attitude until becoming employees with a high WFH one. Although this assumption may appear

of difficult application, it remains however plausible for most of occupations with low WFH attitude given both the limited threshold to overpass (i.e. 52.2 out of 100) and the fact that the WFH attitude indicator is multidimensional. In fact, even if a dimension of the WFH attitude indicator is unchangeable, maybe there are margins of improvement in the other six dimensions (see section 2 for details on the adopted indicator of WFH attitude). Of course, in the adopted methodological framework, the counterfactual scenario is represented by the starting situation, thus assuming no change in WFH attitude of occupations.

In this study, we estimate influences of a change in WFH attitude on gross labour income distribution focusing on the following distributional statistics: the mean, the Gini index, and the nine deciles⁴. Sample values of first two statistics are reported in section 4.1, while values of the nine deciles are presented in figure A.1. As for the UPEs estimation, given the potential endogeneity of job characteristics on the dependent variable, we consider two different vectors of covariates. The first one (UPE1) includes only demographic characteristics regarding the individual and her household (i.e. gender, age group, education level, migration status, marital status, household size, presence of minors, municipality size, and macro-region of residence). The second vector of covariates (UPE2) also adds job characteristics (i.e. job contract, public servant, and activity sector dummies), which may determine potential endogeneity issues. More details on variables are provided in table A1.

Differently from the common choice to drop female employees to minimize selection issues, we decided not to restrict the sample to males only but to show separated results by males and females. To further explore the heterogeneous influences of an overall increase of WFH attitude along labour income distribution, we also report main results distinguishing by age group and the extent of Covid-19 infection at provincial (NUTS-3) level as reported by the Italian Civil Protection Department (2020). All descriptive statistics and estimates consider individual sample weights. As a sensitivity analysis, to control for the occupation skill heterogeneity among employees, we estimated our main results using a set of covariates including skill level dummies (see section 5). We also controlled for potential endogeneity related to the WFH attitude, developing other robustness checks on different inequality indicators, sample selections, and scaled estimates. Their results, provided in section 5, overall confirm the robustness of our main considerations.

4. Results

4.1 Descriptive evidences

Preliminary evidences about the sample composition, values of mean and Gini index of annual labour income, mean value of the WFH attitude index and share of employees with high attitude level by group of employees are shown in table 1⁵.

⁴ For the sake of brevity, formulas to calculate the RIFs for the mean, the Gini index, and the quantiles are not replicated here, but they can be easily found in Choe and Van Kerm (2018).

⁵ The same information is also provided by activity sector in which employees work in table A2.

Table 1. Sample composition, mean and Gini index of annual labour income, mean value of the WFH attitude index and share of employees with high attitude level by group of employees

Variable	Sample composition		Annual labour income		WFH attitude	
	Mean	Std. Dev.	Mean	Gini index	Mean	% of employees with high attitude
Low WFH attitude	0.518	0.500	24,731	0.261	40.5	0.0
High WFH attitude	0.482	0.500	27,320	0.296	65.1	100.0
Male	0.537	0.499	29,321	0.283	52.3	45.3
Female	0.463	0.499	22,098	0.256	52.5	51.5
Aged 25-35	0.204	0.403	21,962	0.257	51.7	46.9
Aged 36-50	0.467	0.499	26,146	0.279	52.5	47.9
Aged 51-64	0.329	0.470	28,232	0.282	52.5	49.4
Lower secondary education (or lower)	0.313	0.464	23,500	0.284	46.7	27.4
Upper secondary education	0.464	0.499	25,670	0.267	54.6	54.7
Tertiary education	0.224	0.417	30,082	0.277	55.8	63.7
Local	0.882	0.322	25,912	0.276	52.4	48.4
Migrant within macro-region	0.031	0.173	28,434	0.360	53.2	52.1
Migrant within country	0.066	0.248	26,839	0.276	52.8	51.5
Foreign migrant	0.021	0.143	22,429	0.306	48.2	22.8
Unmarried	0.429	0.495	24,045	0.261	52.3	47.6
Married	0.571	0.495	27,432	0.290	52.4	48.6
Household size = 1	0.141	0.348	26,961	0.269	53.4	48.9
Household size = 2	0.202	0.401	25,973	0.284	52.1	48.1
Household size = 3	0.283	0.450	24,772	0.258	52.5	48.8
Household size = 4	0.291	0.454	26,574	0.289	52.6	49.0
Household size = 5 or more	0.083	0.276	26,349	0.325	50.1	42.3
Absence of minors	0.657	0.475	25,770	0.285	52.4	48.4
Presence of minors	0.343	0.475	26,378	0.270	52.4	47.7
Very small municipality	0.206	0.404	25,394	0.270	50.9	41.4
Small municipality	0.329	0.470	26,376	0.285	51.5	45.2
Medium municipality	0.159	0.366	25,668	0.269	52.3	48.1
Big municipality	0.167	0.373	26,196	0.300	53.1	52.6
Metropolitan city	0.139	0.346	25,998	0.269	55.9	60.3
North	0.538	0.499	26,666	0.267	52.4	47.1
Center	0.214	0.410	24,911	0.267	53.6	53.2
South	0.248	0.432	25,410	0.317	51.3	46.1
Full-time open-ended worker	0.695	0.461	29,225	0.240	53.0	48.9
Part-time open-ended worker	0.153	0.360	17,527	0.293	52.7	52.7
Temporary worker and other	0.152	0.359	19,659	0.310	49.4	40.3
Private sector employee	0.700	0.458	25,443	0.301	52.7	47.8
Public servant	0.300	0.458	27,228	0.228	51.5	49.1
Less Covid-19 infected area	0.516	0.500	25,624	0.297	52.2	48.7
More Covid-19 infected area	0.484	0.500	26,356	0.262	52.5	47.6
Total sample	-	-	25,979	0.280	52.4	48.2

Notes: all descriptive statistics are computed with individual sample weights. Employees with high WFH attitude level are defined as those reporting a value of the WFH attitude index over the sample median (i.e. 52.2).

Source: elaborations of the Authors on ICP 2013 and Inapp PLUS 2018 data

Table 1 highlights that our variable of interest (i.e. having an occupation with a high WFH attitude level) splits the sample of 14,307 employees in two almost equal parts, but this is expected since it is based on the sample median.

At the opposite, employees in our sample appear to be more often males, aged 36-50, with an upper secondary education, local, and married. They live in households with more than four members in 37% of cases and with at least one minor child in 34% of cases. They tend to be located in small municipalities (i.e. cities with 5,000-20,000 inhabitants) and in the North of Italy, while 48% of them is resident in those provinces more affected by the novel coronavirus (i.e. overall Covid-19 cases represents more than 3.2‰ of total population). Finally, employees in our sample have more frequently a full-time open-ended contract and work in the private sector.

Focusing on labour income differences at five percent level only, table 1 shows that employees with high WFH attitude report on average a higher labour income than those doing an occupation with low attitude levels. Also, employees appear to meanly receive a higher income if male, older (i.e. aged 51-64), graduated, married, live in northern regions, full-time open-ended worker, or public servant. At the opposite, employees living in households with three members tend to report a significantly lower labour income with respect to the others.

Table 1 points out that groups of employees with higher labour income often report a greater within-level of income inequality too (i.e. higher values of Gini index), with few exceptions. For example, in this case, greater inequality levels are presented by employees with a lower secondary education (or lower), those living in bigger households or in the South of Italy, those having a temporary or other atypical job contracts, and those working in the private sectors.

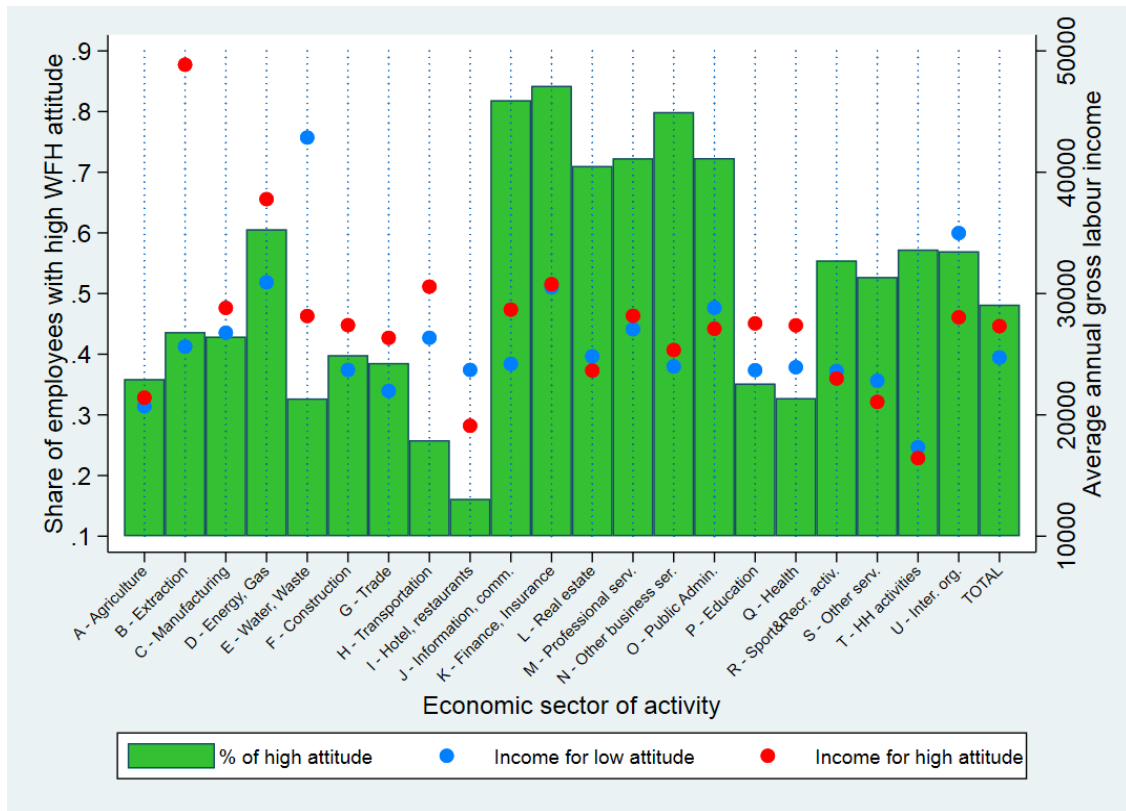
Finally, it can be noted that employees with high WFH attitude levels are more often female, older, high-educated, as well as among those living in metropolitan cities (table 1). Interestingly, a higher level of WFH attitude does not therefore imply a greater labour income on average as, for instance, employees living in metropolitan areas or female ones in particular are not the groups reporting highest income levels.

Figure 1 brings out that economic activity sectors being characterized by greater shares of employees with high WFH attitude are: Finance and Insurance, Information and Communications, Business Services, Professional Services, Other Business Services (e.g. car renting, travel agencies, employment agencies) and Public Administration. Figure 1 also highlights that employees working in sectors with high WFH attitude receive, on average, a greater annual labour income than the others (€27,300 vs €24,700).

Looking at differences between sectors, employees with high attitude levels receive this ‘wage premium’ in 13 out of 21 sectors, and sometimes – in B and E sectors – the wage premium is remarkable. At the opposite, employees with high WFH attitude receive a lower labour income than the others especially in Hotel and Restaurants and Personal Services (i.e. R-U sectors).

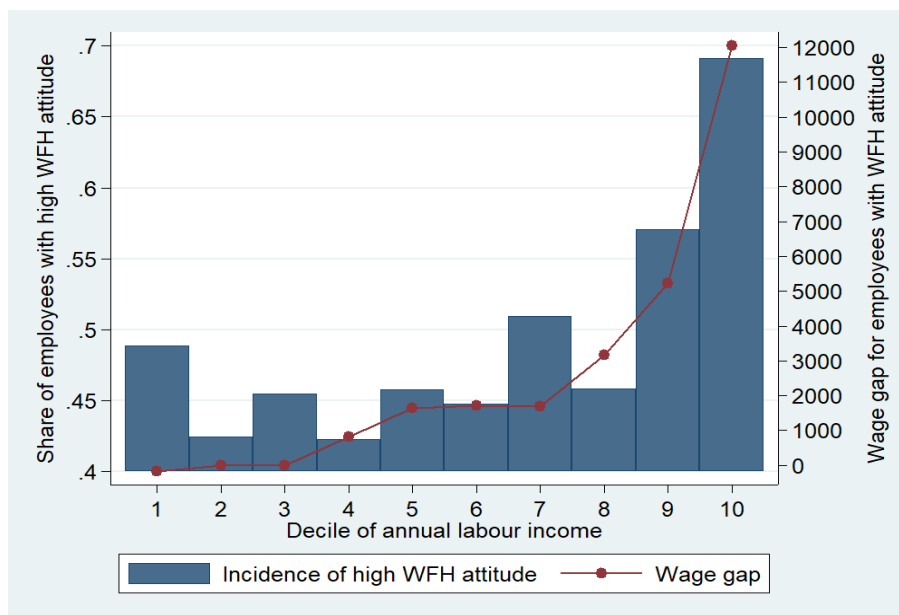
As for potential differences across the labour income distribution, figure 2 clearly shows that the wage gap between employees with high and low WFH attitude is increasing along the distribution and reaches highest values in the last two decile groups, as well as the same incidence of high WFH attitude among employees.

Figure 1. Incidence of high WFH attitude and average labour income by activity sector



Notes: descriptive statistics are computed with individual sample weights. Employees with high WFH attitude level are defined as those reporting a value of the WFH attitude index over the sample median (i.e. 52.2).
 Source: elaborations of the Authors on ICP 2013 and Inapp PLUS 2018 data

Figure 2. Incidence of high WFH attitude and wage gap in favor of employees with high attitude levels by decile of annual income



Notes: descriptive statistics are computed with individual sample weights. Employees with high WFH attitude level are defined as those reporting a value of the WFH attitude index over the sample median (i.e. 52.2).
 Source: elaborations of the Authors on ICP 2013 and Inapp-PLUS 2018 data

4.2 Kolmogorov-Smirnov test

In figure 3 we plot the kernel estimates of the labour income density for both groups. It can be noted that the income distribution for employees with high WFH attitude is clearly shifted to the right with respect to that of employees with low WFH attitude.

Figure 3. Labour income distribution by level of WFH attitude



Notes: descriptive statistics are computed with individual sample weights. Employees with high WFH attitude level are defined as those reporting a value of the WFH attitude index over the sample median (i.e. 52.2).

Source: elaborations of the Authors on ICP 2013 and Inapp PLUS 2018 data.

As a further evidence, we develop the non-parametric Kolmogorov-Smirnov test based on the concept of stochastic dominance to assess the existence of differences in all moments between the two distributions. The notion of first order stochastic dominance can establish a ranking for compared distributions. Results of the Kolmogorov-Smirnov test for the first order stochastic dominance shown in table 2 confirm that the annual gross labour incomes of employees with high WFH attitude stochastically dominate, at the 1 percent level of significance, those reported by employees doing occupations with low WHF attitude.

Table 2. Kolmogorov-Smirnov test for comparison between employees with high and low WFH attitude

	Combined	Low WFH attitude	High WFH attitude
KS ₂	0.0976 (0.000)		
KS ₁		0.0976 (0.000)	-0.0059 (0.7333)

Note: p-values in parentheses.

Source: elaborations of the Authors on ICP 2013 and Inapp PLUS 2018 data

4.3 Influences of occupations attitude towards working from home

Table 3 highlights that the WFH attitude significantly affects the labour income distribution and inequality. Specifically, RIF regression results suggest that replacing all employees having low WFH attitude level with those having high attitude levels would determine an increase of both the mean labour income up to €2,600 (we refer to that as ‘premium’) and the Gini index for about 0.04 points. Considering that the mean labour income in our sample is equal to about €26,000 (see table 1), this means that an overall positive variation of WFH attitude would lead to a 10% increase on the mean labour income.

Table 3. Unconditional effects of WFH attitude on the mean and Gini index

Group of employees	Mean value			Gini index		
	UE	UPE1	UPE2	UE	UPE1	UPE2
Total sample	2,589***	1,291**	980	0.036**	0.044***	0.035**
Male	4,730***	2,678**	2,338**	0.036	0.032	0.041
Female	1,110**	-75	-337	0.024**	0.031***	0.008
Aged 25-35	3,757***	2,900**	2,706*	0.045	0.061	0.077*
Aged 36-50	241	-238	-826	0.007	0.025	0.011
Aged 51-64	4,964***	2,613***	2,508**	0.068***	0.070***	0.050*
Less Covid-19 infected area	1,934*	777	465	0.026	0.050**	0.035
More Covid-19 infected area	3,304***	1,834**	1,372**	0.045*	0.039**	0.031*

Note: Standard errors are clustered by NUTS-3 region; *** p<0.01, ** p<0.05, * p<0.1. The table presents coefficients of the variable of interest only. Complete estimates for the pooled sample are provided in table A3.

Source: elaborations of the Authors on ICP 2013 and Inapp PLUS 2018 data

As expected, UPE estimates (i.e. thus ones including relevant covariates) present reduced magnitudes but effects remain overall positive and significant. Disaggregating by employees’ characteristics, we find that the wage premium related to an increase in WFH attitude regards only male – further enlarging the gender pay gap (see table 1) –, younger and older employees, as well as those living in more Covid-19 infected provinces (i.e. the Northern and more developed ones). To this end, our results are in line with Goldin (2010) who reports that the gender wage gap may be also due to lack of flexibility in work arrangements, particularly in financial and business services, which we find being sectors with greater incidences of high WFH attitude. Also, according to results in table 3, an overall positive change in WFH attitude among Italian employees would increase the Gini index especially among female and older employees.

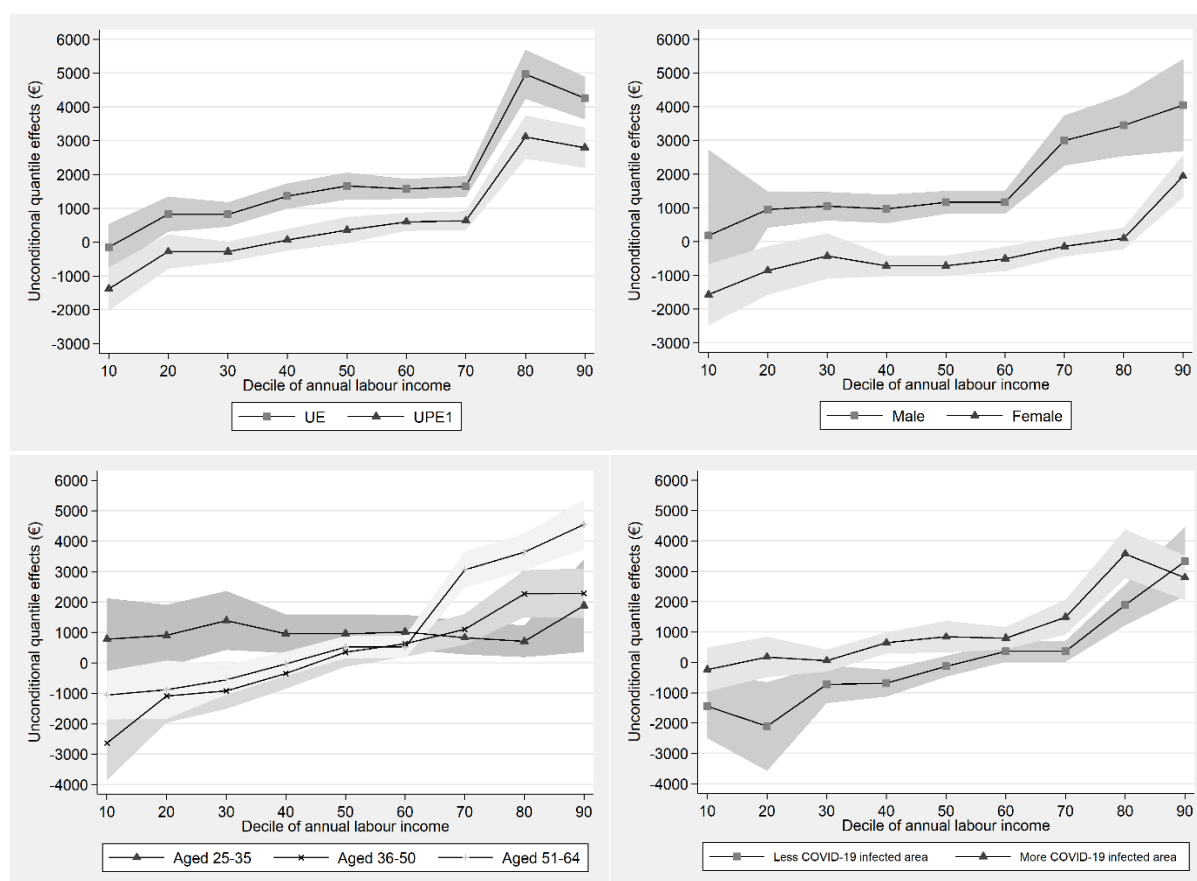
Looking at the WFH attitude influences along the labour income distribution (top-left panel of figure 4), the premium related to the shift of employees from low to high WFH attitude appears to be greater among high-paid employees and null (or even negative if we look at UPE1 estimates) in the left-side of the distribution. In particular, the highest premium is reached at the 8th decile where it amounts to about €5,000, thus a 17% increase with respect to its baseline value (figure A1).

Top-right panel of figure 4 points out that the wage premium deriving from an overall increase of employees with high WFH attitude level would be mainly in favor of male employees, whereas that would represent a penalty for female ones except for those in last decile group (note that the latter however would receive a lower premium than males.). Results are in line with Biagetti and Scicchitano

(2011) and Mussida and Picchio (2014) who find a glass ceiling effect in the gender wage gap in Italy⁶. A positive change in WFH attitude levels among employees aged 25-35 would have a stable and positive effect along their whole distribution (bottom-left panel of figure 4). At the opposite, decreasing the number of employees with low WFH attitude levels would determine unequal influences along labour income distribution of older employees. In particular, employees aged 51 or more would report a wage penalty in the first three deciles and a relevant premium from the seventh decile onwards (significantly higher than the other groups).

Finally, bottom-right panel of figure 4 shows that employees in more Covid-19 infected area would benefit more from the overall WFH attitude improvement of occupations. This is an interesting and important evidence as these territories actually need for this kind of policy, but its influence is still unequal along the labour income distribution of their employees as it would be more in favor of high-paid ones.

Figure 4. Unconditional effects of WFH attitude along the labour income distribution



Note: standard errors are clustered by NUTS-3 region. Shadowed area report confidence intervals at 90% level. Estimates by employees' characteristics refer to the UPE1 specification. Estimates based on UPE2 specification are provided in figure A2. Complete estimates for the pooled sample are provided in tables A4-A6.

Source: elaborations of the Authors on ICP 2013 and Inapp PLUS 2018 data

⁶ Similarly Biagetti and Scicchitano (2014) report a larger male-female wage gap among high paid jobs in Italy. The glass ceiling effect has been found also in Spain (Scicchitano 2014), in Sweden (Albrecht *et al.* 2003), in the UK (Scicchitano 2012).

5. Robustness checks

In this section, we briefly summarize several robustness checks of the main results presented in the paper, concerning scaled RIF regression results to point estimates, selection issue, exclusion of part-time and temporary employees, different income inequality indexes, or including additional covariates in the regressions.

First, as each group of employees reports on average different income levels with respect to the others (see, for instance, wage gaps between male and female employees in table 1), we decided to also present scaled UE and UPE estimates representing main results of our analysis. To obtain scaled estimates, we divided recentered influence functions used as dependent variables by respective point estimates (i.e. mean or quantile value of annual gross labour income of that specific group of employees). Scaled estimates may be therefore interpreted as growth rates of the mean and decile values related to marginal changes in the number of employees having a high WFH attitude level. Scaled UE and UPE estimates presented in table 4 and figure 5 overall confirm the robustness of our results.

Table 4. Scaled unconditional effects of WFH attitude on the mean

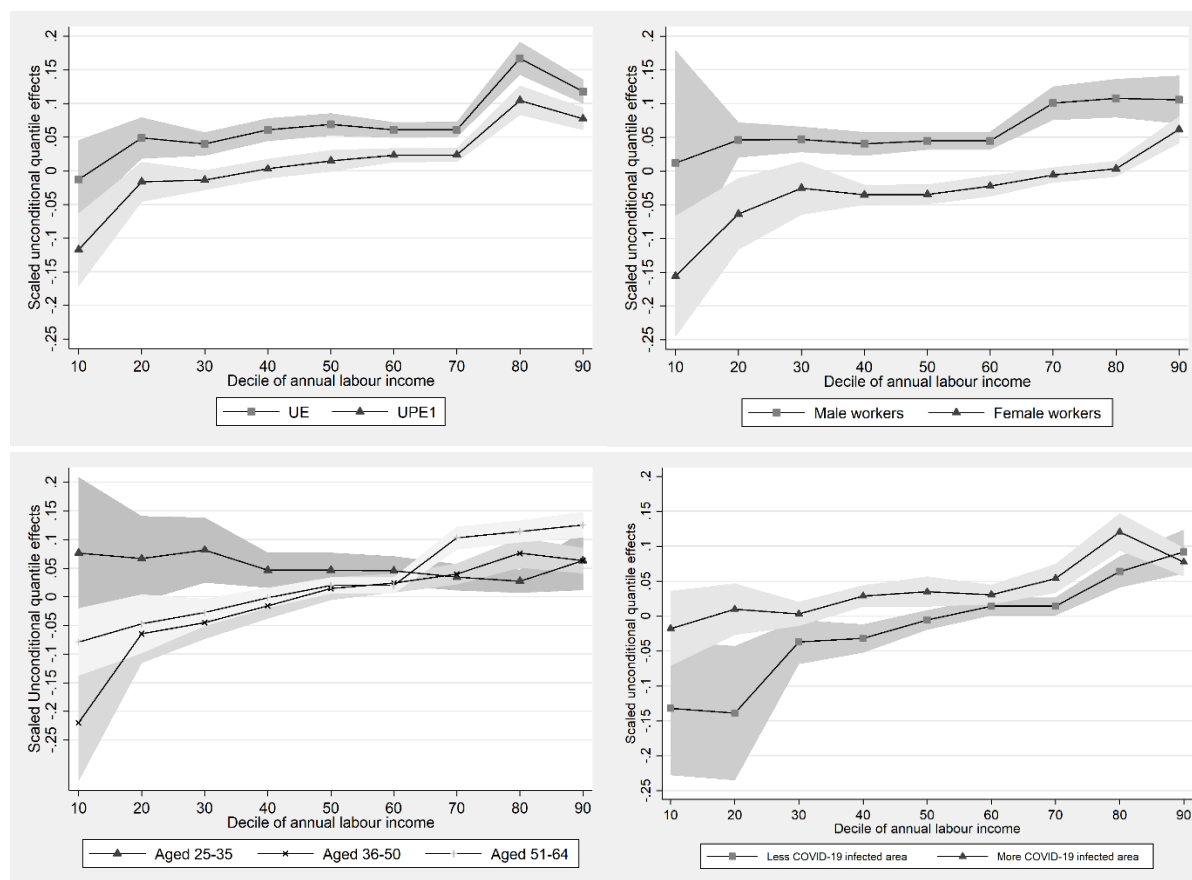
Group of employees	Mean value		
	UE	UPE1	UPE2
Total employees	0.100***	0.050**	0.038
Male	0.161***	0.091**	0.080**
Female	0.050**	-0.003	-0.015
Aged 25-35	0.171***	0.132**	0.123*
Aged 36-50	0.009	-0.009	-0.032
Aged 51-64	0.176***	0.093***	0.089**
Less Covid-19 infected area	0.075*	0.030	0.018
More Covid-19 infected area	0.125***	0.070**	0.052**

Notes: standard errors are clustered by NUTS-3 region; *** p<0.01, ** p<0.05, * p<0.1. The table presents coefficients of the variable of interest only.

Source: elaborations of the Authors on ICP 2013 and Inapp PLUS 2018 data

Second, in order to control for selection bias in the WFH attitude for the two groups of employees, we also estimate the influence of the WFH attitude on the logarithm of the labour income distribution by adopting a non-parametric framework allowing for flexibly control for potential confounders. Specifically, we implement an inverse probability weighting (IPW) estimator as proposed by Di Nardo *et al.* (1996) and Firpo (2007). This method estimates quantiles for two counterfactual distributions, one if every employee had a high WFH attitude, the other if they had all a low WFH attitude, where in the first stage the conditional probability of having a low(high) WFH attitude at work is estimated by using a Probit model, given a set of characteristics. In other words, the counterfactual density can be determined by a 'reweighting' function that estimates the probability of having a WFH attitude as a function of all the other characteristics to be kept constant (Leonida *et al.* 2020; Scicchitano *et al.* 2020). The definition of the set of observable conditioning variables is crucial to ensure the unconfoundedness assumption (Albanese and Gallo 2020), i.e. the potential increase in the labour income of employees in different levels of WFH attitude is independent of the actual attitude level.

Figure 5. Scaled unconditional effects of WFH attitude along the labour income distribution



Notes: standard errors are clustered by NUTS-3 region. Shadowed area report confidence intervals at 90% level. Estimates by employees' characteristics refer to the UPE1 specification.
 Source: elaborations of the Authors on ICP 2013 and Inapp PLUS 2018 data

In this robustness check, we adopt the two sets of covariates defined in section 3, thus UPE 1 (only exogenous variables) and UPE 2 (including potentially endogenous variables on the actual job). We believe that these sets of covariates considerably reduce the role of unobserved heterogeneity between the two groups of workers. Nonetheless, even though controlling for a large number of relevant characteristics that may affect both outcome and treatment selection, we cannot avoid that other unobservable confounding factors may be still in place. Table A7 reports estimated coefficients on the mean and nine decile values from the IPW approach. The effect of having a high WFH attitude on the mean is equal to +3.9% controlling for UPE 1 variables and +3.5% when the UPE 2 set of covariates is considered. Results indicate that the estimated influence of the WFH attitude on income distribution is not substantially distorted by a selection bias, thus strengthening the evidence obtained through the RIF method. Third, as our analysis is based on a definition of labour income which is annual referred, we want to verify that our results are biased by the presence of part-time and temporary employees in the sample. So, in this robustness check, we drop from the sample all employees having these employment contracts. Results by including only full-time open-ended employees are presented in table A8 and figure A3 and strongly corroborate our main conclusions. Fourth, we run RIF estimates on two different income inequality indexes with respect to the one we adopted (i.e. the Gini index): the mean log deviation and the Atkinson index with $e=1$. Results of these

tests, presented in table A9 for each group of employees and in table A10 for the pooled sample, overall confirm the robustness of our main conclusions. Finally, we further enlarge the set of covariates used for UPE estimates including other three probably endogenous variables. Specifically, we include the physical proximity and the disease exposure indexes recently provided by Barbieri *et al.* (2020) and the occupation skill level of employees to control for skill heterogeneity as suggested by Picchio and Mussida (2011) and Leonida *et al.* (2020). As for the physical proximity index, it ranges from 0 to 100 and it is measured for each occupation at 5-digit ISCO classification level through the following question from the ICP 2013 survey: “During your work are you physically close to other people?”. As for the disease exposure index, it ranges from 0 to 100 and it is measured for each occupation at 5-digit ISCO classification level through the following question from the ICP 2013 survey: “How often does your job expose you to diseases and infections?”. As for the occupation skill level, it is included through a set of dummy variables representing different levels of the ISCO classification of occupations. In particular, we define as: ‘Medium skill level’, employees in the fourth ISCO level (i.e. clerical support workers); ‘High skill level’, employees in the third one (i.e. technicians and associate professionals); ‘Very high skill level’, employees in the first two ISCO levels (i.e. managers and professionals). The reference category is ‘Low skill level’. We label estimates based on this model specification as UPE3 and we present them for the total sample in tables A.11 and A.12 in the appendix in comparison with UPE2 ones. Outcomes of these robustness checks overall confirm that our main results hold even considering these additional relevant covariates.

6. Conclusions

Based on a unique dataset and unconditional quantile regression methods, our analysis aims to provide useful insights to policymakers who are designing strategies to adopt in the labour market for future phases of the Covid-19 pandemic, as it might be longer than expected.

Although working from home (WFH) can represent the right answer to contain the infection spread, potential ‘collateral effects’ of this working procedure on income inequality among employees should not be underestimated. Our results show that increasing WFH attitude levels of occupations would lead on average to a growth of labour income levels, probably because of their higher productivity. However, it would also determine a rise of labour income inequality among Italian employees as benefits from a positive change in occupations WFH attitude tend to be greater for male, older and high-paid employees, as well as those living in provinces more affected by the novel coronavirus. Our results hold after a number of robustness checks, regarding different income inequality indexes, several model specifications, and scaled RIF regressions. Whether WFH is confirmed as a lasting solution after the Covid-19 pandemic, our results suggest that it risks to exacerbate pre-existing inequalities in the Italian labour market. In this respect, policies aimed at alleviating inequality⁷, like income support measures broad enough to cover most vulnerable employees or training courses filling potential knowledge gaps seem to be of outmost importance.

⁷ Lucchese and Pianta (2020) look at the universal public health as a crucial element of an egalitarian policy.

Appendix

A. Descriptive statistics and additional estimates

Table A1. Variables description

Variable	Description
Annual gross labour income	Continuous variable representing the annual gross labour income. All recentered influence functions on distributional statistics are based on this variable.
High working from home (WFH) attitude	Binary variable reporting the level of WFH attitude. The WFH attitude is measured, for each occupation at 5-digit ISCO classification level, through a composite index recently introduced by Barbieri <i>et al.</i> (2020). This index relies on replies to seven questions in the ICP 2013 survey questionnaire regarding: (i) the importance of performing general physical activities (which enters reversely); (ii) the importance of working with computers; (iii) the importance of manoeuvring vehicles, mechanical vehicles or equipment (reversely); (iv) the requirement of face-to-face interactions (reversely); (v) the dealing with external customers or with the public (reversely); (vi) the physical proximity (reversely); and (vii) the time spent standing (reversely). The WFH attitude is calculated as average of the listed seven items and ranges from 0 to 100. Binary variable is equal to 1 for those having an index value over the sample mean (i.e. 52.2), and 0 otherwise.
Female	Binary variable taking value 1 for female, 0 for male.
Aged 36-50 Aged 51-64	Binary variables representing the age group of individuals. The reference category is Aged 25-35.
Upper secondary education Tertiary education	Binary variables representing the highest education level achieved. The reference category is composed by Lower secondary education (or lower education level).
Migrant within macro-region Migrant within country Foreign migrant	Binary variables representing the migration status. An individual is 'Migrant within macro-region' if her region of birth and her region of residence belong to the same macro-region (i.e. North, Center, or South). An individual is 'Migrant within country' if her region of birth belongs to a different macro-region with respect to her region of residence. An individual is 'Foreign migrant' if she moves from outside Italy. The reference category is Local.
Married	Binary variable taking value 1 for married people, and 0 otherwise.
Household size = 2 Household size = 3 Household size = 4 Household size = 5 or more	Binary variables representing the household size. The reference category is Single person (or Household size = 1).
Presence of minors	Binary variable taking value 1 for people living in households with at least one minor child, and 0 otherwise.
Small municipality Medium municipality Big municipality Metropolitan city	Binary variables representing the size of the municipality of residence. Small municipality has a number of inhabitants between 5,000 and 20,000, Medium municipality has 20,000 - 50,000 inhabitants, Big municipality counts 50,000 - 250,000 inhabitants, and Metropolitan city has 250,000 or more inhabitants. The reference category is Very small municipality (number of inhabitants lower than 5,000).
Centre South	Binary variables representing the macro-region of residence. The reference category is North.
Part-time open-ended worker Temporary worker and other	Binary variables representing the type of job contract. The reference category is Full-time open-ended worker.
Public servant	Binary variable taking value 1 for employees working in the public sector, and 0 otherwise.
Less Covid-19 infected area More Covid-19 infected area	Variable representing the degree of Covid-19 infection at provincial level. The infection degree is measured as the incidence of Covid-19 cases on total population at provincial level. People live in a 'more Covid-19 infected' area if their province of residence reports an infection incidence over the sample median (i.e. 3.2%). Alternatively, they live in a 'less Covid-19 infected' area. Data on the overall Covid-19 cases at provincial level are provided by the Italian Civil Protection Department (2020) and refers to the period between February 24 and May 5, 2020.

Table A2. Sample composition, mean and Gini index of annual labour income, mean value of the WFH attitude index and share of employees with high attitude level by economic sector of activity

Economic sector of activity	Sample composition		Annual labour income		WFH attitude	
	Mean	Std. Dev.	Mean	Gini index	Mean	% of employees with high attitude
A - Agriculture	0.024	0.153	20,960	0.270	49.8	35.9
B - Extraction	0.006	0.077	35,770	0.380	54.3	43.7
C - Manufacturing	0.168	0.374	27,650	0.252	52.4	42.9
D - Energy, Gas	0.016	0.127	35,084	0.356	56.5	60.6
E - Water, Waste	0.005	0.068	38,049	0.424	51.0	32.7
F - Construction	0.029	0.167	25,176	0.242	49.6	39.8
G - Trade	0.098	0.298	23,662	0.305	48.4	38.6
H - Transportation	0.049	0.216	27,445	0.262	49.6	25.8
I - Hotel, restaurants	0.035	0.184	22,965	0.366	39.0	16.2
J - Information, comm.	0.040	0.196	27,866	0.275	63.8	81.9
K - Finance, Insurance	0.038	0.191	30,730	0.277	64.6	84.2
L - Real estate	0.003	0.053	23,995	0.236	58.2	71.0
M - Professional services	0.062	0.241	27,863	0.341	59.9	72.3
N - Other business services	0.040	0.196	25,076	0.222	62.6	79.9
O - Public Administration	0.070	0.254	27,581	0.254	59.8	72.3
P - Education	0.124	0.329	25,040	0.194	47.9	35.2
Q - Health	0.105	0.307	25,060	0.281	44.6	32.8
R - Sport, recreational activ.	0.012	0.109	23,277	0.302	52.6	55.5
S - Other services	0.068	0.252	21,895	0.316	53.3	52.7
T - Household Activities	0.008	0.087	16,822	0.232	53.6	57.3
U - International organizations	0.002	0.046	31,033	0.339	58.9	57.0
Total sample	-	-	25,979	0.280	52.4	48.2

Note: all descriptive statistics are computed with individual sample weights. Employees with high WFH attitude level are defined as those reporting a value of the WFH attitude index over the sample median (i.e. 52.2).

Source: elaborations of the Authors on ICP 2013 and Inapp PLUS 2018 data

Table A3. Unconditional effects on the mean and Gini index in the total sample

Variable	Mean value			Gini index		
	UE	UPE1	UPE2	UE	UPE1	UPE2
High WFH attitude	2,589***	1,291**	980	0.036**	0.044***	0.035**
Female		-8,870***	-6,090***		-0.022	-0.047***
Aged 36-50		4,150***	3,506***		0.010	0.039**
Aged 51-64		5,985***	5,083***		-0.005	0.048*
Upper secondary education		3,843***	3,697***		-0.033	-0.010
Tertiary education		9,938***	9,671***		-0.009	0.054**
Migrant within macro-region		1,331	2,158		0.091	0.077
Migrant within country		18	-108		0.006	0.014
Foreign migrant		-761	-613		0.063**	0.049
Married		3,486***	2,908***		0.034	0.046*
Household size = 2		-1,652	-1,022		0.001	-0.008
Household size = 3		-3,035***	-1,982*		-0.016	-0.030
Household size = 4		-1,845*	-757		0.014	-0.004
Household size = 5 or more		-1,089	484		0.055	0.036
Presence of minors		-418	-636		-0.042	-0.045
Small municipality		812	841		0.013	0.014
Medium municipality		-371	-465		-0.004	-0.006
Big municipality		56	275		0.024	0.020
Metropolitan city		-596	-224		0.001	-0.003
Center		-2,172***	-1,863***		0.003	-0.001
South		-2,432***	-1,541*		0.047**	0.053**
Part-time open-ended worker			-8,381***			0.139***
Temporary worker and other			-6,504***			0.095***
Public servant			127			-0.053**
Constant	24,731***	22,431***	20,808***	0.263***	0.248***	0.173***
Activity sector dummies	No	No	Yes	No	No	Yes
Observations	14,307	14,307	14,307	14,307	14,307	14,307
R-squared	0.002	0.043	0.061	0.001	0.004	0.016

Note: Notes: Standard errors are clustered by NUTS-3 region; *** p<0.01, ** p<0.05, * p<0.1.

Source: elaborations of the Authors on ICP 2013 and Inapp PLUS 2018 data

Table A4. Unconditional effects of WFH attitude along the wage distribution (UE estimates)

Variable	p10	p20	p30	p40	p50	p60	p70	p80	p90
High WFH attitude	-153	828***	820***	1,363***	1,660***	1,571***	1,645***	4,965***	4,261***
Constant	11,772***	15,638***	18,780***	20,244***	21,904***	23,534***	26,164***	26,664***	32,323***
Activity sector dummies	No	No	No	No	No	No	No	No	No
Observations	14,307	14,307	14,307	14,307	14,307	14,307	14,307	14,307	14,307
R-squared	0.000	0.001	0.002	0.004	0.006	0.010	0.010	0.017	0.014

Note: Standard errors are clustered by NUTS-3 region; *** p<0.01, ** p<0.05, * p<0.1.

Source: elaborations of the Authors on ICP 2013 and Inapp PLUS 2018 data

Table A5. Unconditional effects of WFH attitude along the wage distribution (UPE1 estimates)

Variable	p10	p20	p30	p40	p50	p60	p70	p80	p90
High WFH attitude	-1,384***	-279	-284	67	356	600***	636***	3,111***	2,795***
Female	-5,591***	-7,235***	-5,820***	-6,309***	-6,554***	-4,090***	-4,287***	-9,628***	-6,442***
Aged 36-50	2,350***	3,172***	2,964***	3,120***	3,398***	2,427***	2,475***	4,597***	2,699***
Aged 51-64	3,891***	5,498***	4,502***	5,024***	5,454***	3,969***	4,090***	7,478***	4,605***
Upper secondary education	4,096***	3,411***	3,253***	3,617***	3,567***	2,890***	3,000***	5,147***	3,625***
Tertiary education	7,268***	7,614***	7,184***	8,386***	8,449***	6,069***	6,307***	12,654***	9,740***
Migrant within macro-region	-4,109***	-1,607**	-22	691	374	59	-129	543	1,317
Migrant within country	-509	-437	284	185	171	244	260	790	-735
Foreign migrant	-3,625*	-5,063***	-2,191***	-1,613*	-1,482	-497	-457	329	841
Married	2,141***	1,345***	1,163***	1,413***	1,595***	1,291***	1,413***	3,455***	2,444***
Household size = 2	-2,218***	-992*	-765*	-779*	-1,082**	-765**	-889***	-800	-478
Household size = 3	-2,466***	-1,903***	-1,485***	-1,469***	-1,836***	-1,364***	-1,528***	-2,114***	-870
Household size = 4	-2,715***	-2,037***	-1,399***	-1,405**	-1,438**	-988**	-1,096***	-740	-24
Household size = 5 or more	-3,457***	-2,803***	-1,515***	-1,385**	-1,393**	-468	-580	335	831
Presence of minors	647	1,095***	702***	1,023***	868***	542***	664***	632	402
Small municipality	468	120	490*	30	-65	-83	-8	-459	-330
Medium municipality	-217	-99	265	46	-13	-137	-157	-866	-586
Big municipality	-970	-720	-24	-402	-196	-327	-260	-810	-72
Metropolitan city	-882*	-1,006**	-50	38	196	-122	-59	498	736*
Center	-1,635***	-2,146***	-1,407***	-1,331***	-1,354***	-948***	-948***	-2,458***	-1,440***
South	-5,030***	-3,661***	-1,938***	-1,909***	-1,889***	-1,159***	-1,180***	-2,371***	-1,699***
Constant	11,829***	15,156***	16,847***	17,870***	19,501***	21,305***	23,847***	22,342***	28,956***
Activity sector dummies	No	No	No	No	No	No	No	No	No
Observations	14,307	14,307	14,307	14,307	14,307	14,307	14,307	14,307	14,307
R-squared	0.067	0.132	0.166	0.171	0.165	0.157	0.157	0.140	0.081

Note: standard errors are clustered by NUTS-3 region; *** p<0.01, ** p<0.05, * p<0.1.

Source: elaborations of the Authors on ICP 2013 and Inapp PLUS 2018 data

Table A6. Unconditional effects of WFH attitude along the wage distribution (UPE2 estimates)

Variable	p10	p20	p30	p40	p50	p60	p70	p80	p90
High WFH attitude	-1,554***	-85	-132	199	406*	652***	677***	2,829***	2,333***
Female	-2,546***	-3,132***	-3,310***	-3,988***	-4,395***	-2,877***	-3,023***	-7,288***	-5,122***
Aged 36-50	564	1,492***	1,876***	2,048***	2,489***	2,032***	2,086***	4,341***	2,931***
Aged 51-64	939	2,675***	2,681***	3,207***	3,952***	3,343***	3,479***	7,359***	5,160***
Upper secondary education	2,936***	2,461***	2,632***	2,973***	3,127***	2,717***	2,833***	5,264***	3,969***
Tertiary education	4,649***	4,704***	5,325***	6,517***	7,075***	5,517***	5,776***	13,002***	10,937***
Migrant within macro-region	-2,877**	-245	842*	1,551**	1,148*	456	278	1,193	1,476
Migrant within country	-865	-954**	-21	-96	-71	119	134	667	-711
Foreign migrant	-2,604	-4,499***	-1,686**	-1,147	-1,223	-474	-445	59	498
Married	1,093**	404	543**	786***	1,054***	1,031***	1,145***	3,079***	2,326***
Household size = 2	-1,262*	-60	-174	-163	-564	-503	-616*	-471	-309
Household size = 3	-940	-333	-494	-458	-950**	-877***	-1,017***	-1,421*	-444
Household size = 4	-1,061	-280	-291	-295	-466	-461	-546	0	372
Household size = 5 or more	-1,281	-614	-150	7	-132	232	152	1,467	1,512
Presence of minors	461	1,086***	690**	982***	801***	490**	605***	523	223
Small municipality	382	100	495*	42	-46	-83	-10	-461	-281
Medium municipality	-299	-119	267	26	-24	-195	-223	-981*	-624
Big municipality	-698	-306	228	-160	38	-226	-159	-710	18
Metropolitan city	-466	-432	329	410	567	44	107	655	936**
Center	-1,235***	-1,743***	-1,142***	-1,052***	-1,069***	-794***	-794***	-2,152***	-1,254***
South	-4,460***	-3,131***	-1,597***	-1,529***	-1,444***	-857***	-862***	-1,579***	-1,011**
Part-time open-ended worker	-10,851***	-15,408***	-9,378***	-8,713***	-7,709***	-4,231***	-4,370***	-6,760***	-3,217***
Temporary worker and other	-9,793***	-9,129***	-5,859***	-6,051***	-5,609***	-2,927***	-3,020***	-4,330***	-2,028***
Public servant	2,340***	2,090***	1,427***	1,342***	993***	225	195	-1,042*	-1,041**
Constant	14,033***	14,773***	17,243***	18,712***	20,447***	21,545***	24,139***	21,468***	28,488***
Activity sector dummies	Yes	Yes	Yes	Yes	Yes	Yes	Yes	Yes	Yes
Observations	14,307	14,307	14,307	14,307	14,307	14,307	14,307	14,307	14,307
R-squared	0.161	0.344	0.322	0.289	0.248	0.208	0.206	0.170	0.101

Note: standard errors are clustered by NUTS-3 region; *** p<0.01, ** p<0.05, * p<0.1.

Source: elaborations of the Authors on ICP 2013 and Inapp PLUS 2018 data

Table A7. Estimated effect of high WFH attitude on the mean and along the labour income distribution (IPW estimation method)

Model spec.	High WFH attitude	Mean value	p10	p20	p30	p40	p50	p60	p70	p80	p90
UPE 1	Male	0.082***	0.000	0.083***	0.077***	0.035	0.067***	0.107***	0.078***	0.057**	0.134***
	Female	-0.009	-0.074**	0.000	0.000	0.000	0.000	0.000	0.000	0.036***	0.065***
	Aged 25-35	0.018	0.000	0.046	0.100***	0.000	0.000	0.000	0.000	0.067***	0.013
	Aged 36-50	0.019	-0.065***	0.000	0.000	0.000	0.000	0.000	0.067***	0.069***	0.112***
	Aged 51-64	0.068***	-0.111***	0.000	0.038***	0.000	0.067***	0.072***	0.102***	0.126***	0.303***
	Less Covid-19 infected area	0.021	-0.069**	0.000	0.000	0.000	0.000	0.000	0.072***	0.069***	0.112***
	More Covid-19 infected area	0.059***	0.000	0.000	0.042***	0.077***	0.071***	0.034***	0.072***	0.171***	0.212***
UPE 2	Male	0.070***	0.000	0.083***	0.038**	0.000	0.067***	0.107***	0.065***	0.057***	0.134***
	Female	0.006	0.000	0.012	0.100***	0.000	0.000	0.000	0.000	0.000	0.000
	Aged 25-35	-0.011	-0.064	0.000	0.000	0.000	0.000	0.000	0.000	0.033	0.000
	Aged 36-50	0.011	-0.065*	0.000	0.000	0.000	0.000	0.000	0.000	0.021	0.112***
	Aged 51-64	0.076***	-0.029	0.000	0.077***	0.071***	0.067***	0.072***	0.102***	0.061*	0.191**
	Less Covid-19 infected area	0.035	-0.015	0.000	0.000	0.000	0.000	0.000	0.072***	0.000	0.112***
	More Covid-19 infected area	0.041**	0.000	0.000	0.042**	0.077***	0.042***	0.040***	0.072***	0.114***	0.212***

Note: standard errors are clustered by NUTS-3 region; *** p<0.01, ** <0.05, * <0.1.

Source: elaborations of the Authors on ICP 2013 and Inapp PLUS 2018 data

Table A8. Unconditional effects of WFH attitude on the mean and Gini index considering only full-time open-ended employees

Group of employees	Mean value			Gini index		
	UE	UPE1	UPE2	UE	UPE1	UPE2
Total sample	3,904***	2,476***	2,092**	0.043*	0.047**	0.035
Male	5,449***	3,305**	3,297**	0.046	0.039	0.039
Female	1,934***	940***	369	0.031**	0.034***	0.009
Aged 25-35	3,757***	2,900**	2,706*	0.045	0.061	0.077*
Aged 36-50	241	-238	-826	0.007	0.025	0.011
Aged 51-64	4,964***	2,613***	2,508**	0.068***	0.070***	0.050*
Less Covid-19 infected area	0.005	0.011	0.028	-0.017	-0.008	0.007
More Covid-19 infected area	6,031***	3,868***	3,417**	0.079***	0.075***	0.059*

Note: standard errors are clustered by NUTS-3 region; *** p<0.01, ** p<0.05, * p<0.1.

Source: elaborations of the Authors on ICP 2013 and Inapp PLUS 2018 data

Table A9. Unconditional effects on the mean log deviation and Atkinson index (e=1)

Group of employees	Mean log deviation			Atkinson index (e=1)		
	UE	UPE1	UPE2	UE	UPE1	UPE2
Total sample	0.030	0.045**	0.038*	0.025	0.037**	0.032*
Male	0.020	0.028	0.038	0.017	0.023	0.031
Female	0.030**	0.037***	0.019	0.026**	0.032***	0.016
Aged 25-35	0.046	0.068*	0.079*	0.039	0.058*	0.067*
Aged 36-50	0.003	0.030	0.021	0.003	0.025	0.018
Aged 51-64	0.059***	0.0762**	0.043	0.049**	0.051**	0.036
Less Covid-19 infected area	0.024	0.058*	0.041	0.019	0.047**	0.034
More Covid-19 infected area	0.036	0.032	0.029	0.031	0.027	0.025

Note: standard errors are clustered by NUTS-3 region; *** p<0.01, ** p<0.05, * p<0.1.

Source: elaborations of the Authors on ICP 2013 and Inapp PLUS 2018 data

Table A10. Unconditional effects on the mean log deviation and Atkinson index (e=1) in the total sample

Variable	Mean log deviation			Atkinson index (e=1)		
	UE	UPE1	UPE2	UE	UPE1	UPE2
High WFH attitude	0.030	0.045**	0.038*	0.025	0.037**	0.032*
Female		-0.026	-0.043*		-0.021	-0.036*
Aged 36-50		0.011	0.041*		0.009	0.034*
Aged 51-64		-0.006	0.048		-0.005	0.040
Upper secondary education		-0.050*	-0.027		-0.042*	-0.023
Tertiary education		-0.035	0.024		-0.030	0.020
Migrant within macro-region		0.114*	0.101*		0.095*	0.084*
Migrant within country		0.011	0.020		0.009	0.016
Foreign migrant		0.040	0.028		0.034	0.024
Married		0.030	0.043		0.025	0.035
Household size = 2		0.001	-0.008		0.000	-0.007
Household size = 3		-0.026	-0.040		-0.022	-0.034
Household size = 4		0.009	-0.008		0.007	-0.007
Household size = 5 or more		0.064	0.045		0.053	0.037
Presence of minors		-0.046	-0.049		-0.039	-0.041
Small municipality		0.013	0.015		0.011	0.012
Medium municipality		0.001	-0.001		0.001	-0.001
Big municipality		0.037	0.034		0.031	0.029
Metropolitan city		0.002	-0.002		0.002	-0.002
Center		0.003	-0.002		0.003	-0.001
South		0.059**	0.063**		0.049**	0.053**
Part-time open-ended worker			0.114***			0.095***
Temporary worker and other			0.102***			0.085***
Public servant			-0.063***			-0.052***
Constant	0.167***	0.167***	0.075	0.154***	0.154***	0.077*
Activity sector dummies	No	No	Yes	No	No	Yes
Observations	14,307	14,307	14,307	14307	14307	14307
R-squared	0.000	0.004	0.012	0.000	0.004	0.012

Note: standard errors are clustered by NUTS-3 region; *** p<0.01, ** p<0.05, * p<0.1.

Source: elaborations of the Authors on ICP 2013 and Inapp PLUS 2018 data

Table A11. Unconditional effects on the mean and inequality indicators in the total sample (UPE2 and UPE3 estimates)

Variable	Mean value		Gini index		Mean log deviation		Atkinson index (e=1)	
	UPE2	UPE3	UPE2	UPE3	UPE2	UPE3	UPE2	UPE3
High SW attitude	980	183	0.035**	0.046*	0.038*	0.056*	0.032*	0.047*
Female	-6,090***	-5,908***	-0.047***	-0.041**	-0.043*	-0.037	-0.036*	-0.031
Aged 36-50	3,506***	3,442***	0.039**	0.036**	0.041*	0.038*	0.034*	0.032*
Aged 51-64	5,083***	4,913***	0.048*	0.044*	0.048	0.045	0.040	0.037
Upper secondary education	3,697***	2,850***	-0.010	-0.000	-0.027	-0.011	-0.023	-0.009
Tertiary education	9,671***	6,783***	0.054**	0.036*	0.024	0.016	0.020	0.014
Migrant within macro-region	2,158	1,938	0.077	0.072	0.101*	0.096	0.084*	0.080
Migrant within country	-108	-311	0.014	0.009	0.020	0.015	0.016	0.012
Foreign migrant	-613	-257	0.049	0.045	0.028	0.023	0.024	0.019
Married	2,908***	2,772***	0.046*	0.046*	0.043	0.042	0.035	0.035
Household size = 2	-1,022	-906	-0.008	-0.006	-0.008	-0.007	-0.007	-0.006
Household size = 3	-1,982*	-1,916*	-0.030	-0.029	-0.040	-0.039	-0.034	-0.032
Household size = 4	-757	-682	-0.004	-0.003	-0.008	-0.008	-0.007	-0.006
Household size = 5 or more	484	438	0.036	0.037	0.045	0.046	0.037	0.038
Presence of minors	-636	-642	-0.045	-0.045	-0.049	-0.049	-0.041	-0.041
Small municipality	841	900	0.014	0.016	0.015	0.016	0.012	0.014
Medium municipality	-465	-471	-0.006	-0.004	-0.001	0.001	-0.001	0.001
Big municipality	275	319	0.020	0.022	0.034	0.036	0.029	0.030
Metropolitan city	-224	-305	-0.003	-0.002	-0.002	0.000	-0.002	0.000
Center	-1,863***	-1,747***	-0.001	-0.002	-0.002	-0.003	-0.001	-0.003
South	-1,541*	-1,541*	0.053**	0.050**	0.063**	0.060**	0.053**	0.050**
Part-time open-ended worker	-8,381***	-7,805***	0.139***	0.146***	0.114***	0.120***	0.095***	0.100***
Temporary worker and other	-6,504***	-6,279***	0.095***	0.095***	0.102***	0.101***	0.085***	0.084***
Public servant	127	-644	-0.053**	-0.061***	-0.063***	-0.069***	-0.052***	-0.058***
Physical proximity index		-33		-0.001		-0.001*		-0.001*
Diseases exposure index		39**		0.001**		0.001**		0.001**
Average skill level		497		-0.067***		-0.092***		-0.077***
High skill level		2,094**		-0.042*		-0.052*		-0.043*
Very high skill level		6,849***		0.054*		0.031		0.026
Constant	20,808***	21,895***	0.173***	0.207***	0.075	0.115	0.077*	0.110*
Activity sector dummies	Yes	Yes	Yes	Yes	Yes	Yes	Yes	Yes
Observations	14,307	14,307	14,307	14,307	14,307	14,307	14,307	14,307
R-squared	0.061	0.062	0.016	0.019	0.012	0.014	0.012	0.014

Note: standard errors are clustered by NUTS-3 region; *** p<0.01, ** p<0.05, * p<0.1.

Source: elaborations of the Authors on ICP 2013 and Inapp PLUS 2018 data

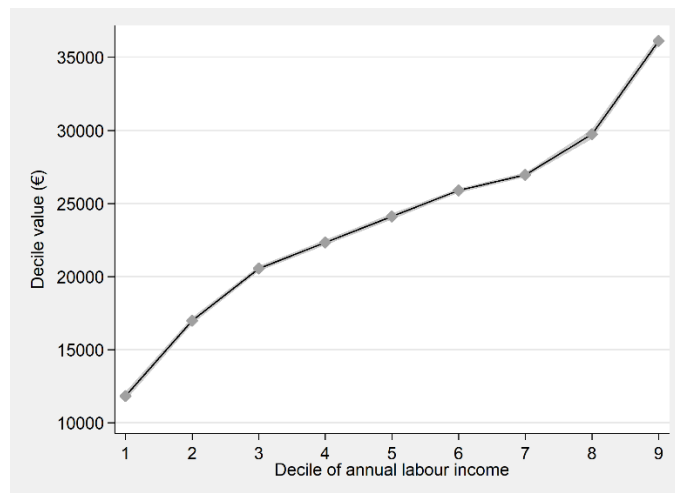
Table A12. Unconditional effects of WFH attitude along the wage distribution (UPE3 estimates)

Variable	p10	p20	p30	p40	p50	p60	p70	p80	p90
High WFH attitude	-2,691***	-1,116***	-687**	-318	-103	288	337	2,448***	1,315***
Female	-2,749***	-3,159***	-3,268***	-3,883***	-4,247***	-2,735***	-2,876***	-6,966***	-4,858***
Aged 36-50	592	1,514***	1,905***	2,082***	2,521***	2,031***	2,084***	4,312***	2,804***
Aged 51-64	896	2,653***	2,669***	3,196***	3,941***	3,301***	3,435***	7,244***	4,914***
Upper secondary education	1,909***	1,731***	1,887***	2,129***	2,259***	2,175***	2,296***	4,403***	3,442***
Tertiary education	3,239***	3,555***	3,843***	4,669***	5,038***	3,950***	4,181***	9,944***	8,167***
Migrant within macro-region	-2,840**	-246	803	1,482**	1,056	356	173	958	1,193
Migrant within country	-823	-935**	-46	-147	-139	34	44	447	-974
Foreign migrant	-2,238	-4,149***	-1,378*	-792	-833	-228	-202	410	787
Married	1,026**	339	478*	707***	962***	960***	1,073***	2,954***	2,181***
Household size = 2	-1,225*	-6	-146	-132	-521	-459	-571*	-395	-139
Household size = 3	-942	-310	-485	-444	-926**	-851***	-990***	-1,377*	-339
Household size = 4	-1,032	-248	-275	-279	-448	-436	-521	52	482
Household size = 5 or more	-1,290	-627	-230	-107	-256	158	77	1,320	1,549
Presence of minors	466	1,084***	686**	976***	792***	484**	599***	513	215
Small municipality	360	86	492*	44	-41	-64	10	-402	-194
Medium municipality	-379	-158	242	9	-33	-194	-220	-965*	-609
Big municipality	-754	-326	230	-144	65	-197	-128	-636	81
Metropolitan city	-619	-516	276	368	536	22	87	630	861**
Center	-1,103***	-1,638***	-1,052***	-952***	-961***	-726***	-726***	-2,055***	-1,160***
South	-4,376***	-3,052***	-1,539***	-1,467***	-1,382***	-832***	-840***	-1,573***	-1,047**
Part-time open-ended worker	-10,771***	-15,251***	-9,130***	-8,370***	-7,298***	-3,899***	-4,029***	-6,097***	-2,597***
Temporary worker and other	-9,639***	-8,974***	-5,696***	-5,850***	-5,382***	-2,776***	-2,868***	-4,084***	-1,840***
Public servant	2,047***	1,848***	1,085***	904***	481	-169	-214	-1,808***	-1,801***
Physical proximity index	19	-11	7	8	-1	-9	-10	-10	-75***
Diseases exposure index	-1	10	6	9	18**	15***	17***	23**	55***
Average skill level	3,754***	2,177***	1,332***	1,050***	742**	174	96	-511	-364
High skill level	2,435***	2,526***	2,502***	3,007***	3,305***	1,940***	1,918***	2,731***	1,057**
Very high skill level	3,047***	2,547***	3,158***	3,933***	4,350***	3,514***	3,579***	6,995***	7,045***
Constant	13,617***	15,256***	16,942***	18,333***	20,310***	21,734***	24,347***	21,618***	31,106***
Activity sector dummies	Yes	Yes	Yes	Yes	Yes	Yes	Yes	Yes	Yes
Observations	14,307	14,307	14,307	14,307	14,307	14,307	14,307	14,307	14,307
R-squared	0.165	0.347	0.331	0.301	0.264	0.227	0.224	0.184	0.118

Note: standard errors are clustered by NUTS-3 region; *** p<0.01, ** p<0.05, * p<0.1.

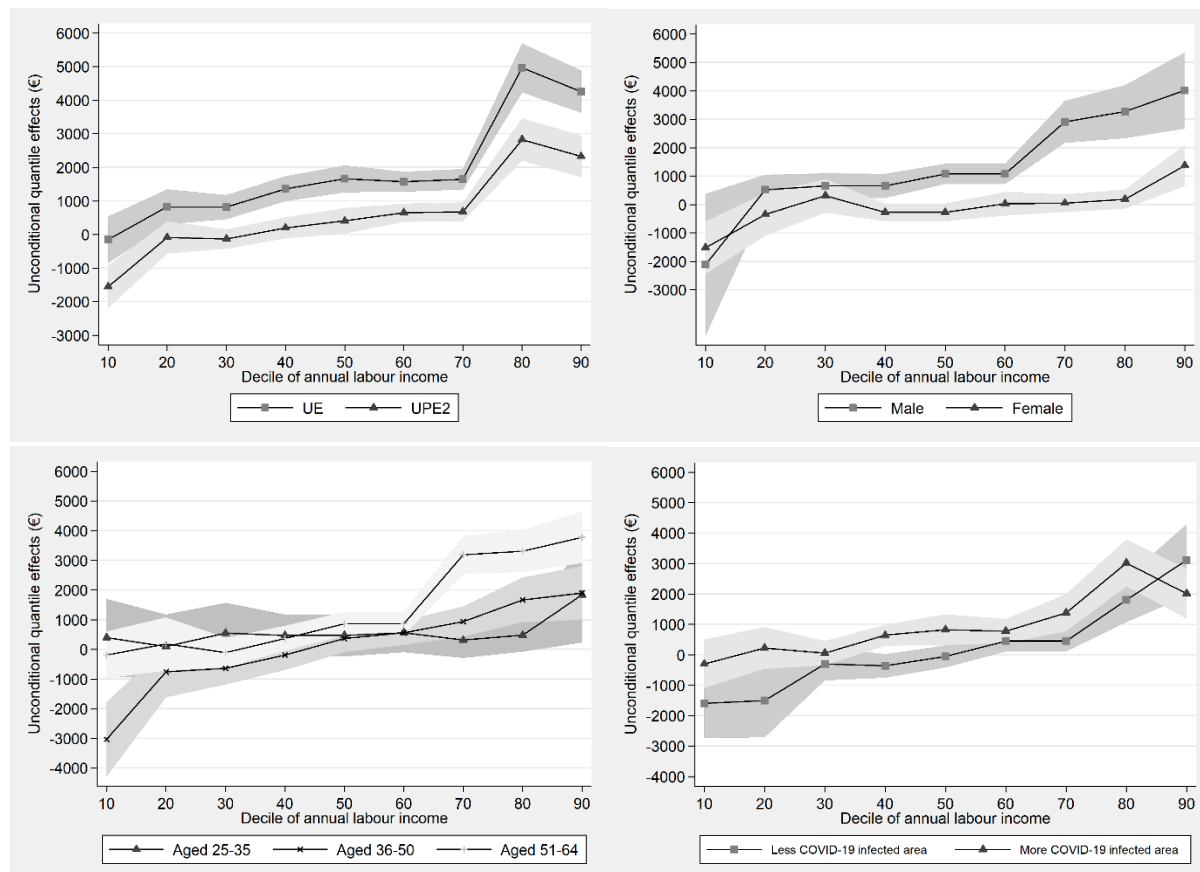
Source: elaborations of the Authors on ICP 2013 and Inapp PLUS 2018 data

Figure A1. Income values by decile of annual labour income



Source: elaborations of the Authors on ICP 2013 and Inapp PLUS 2018 data

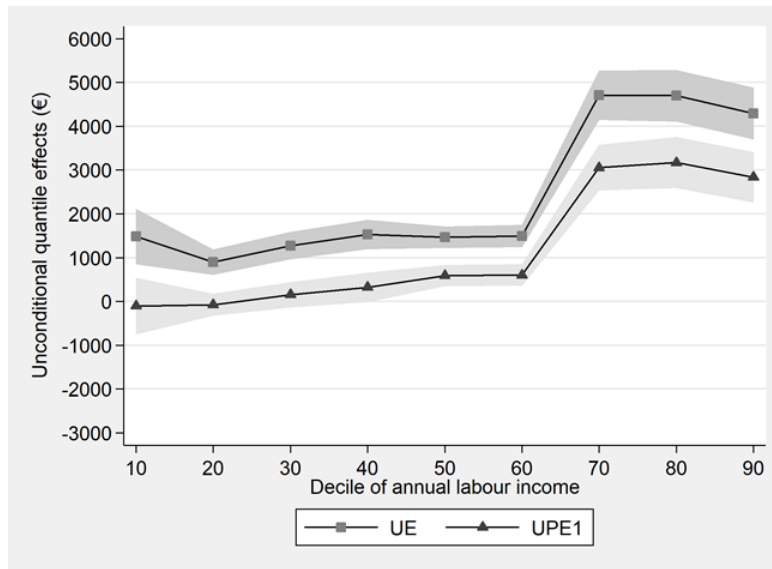
Figure A2. Unconditional effects of WFH attitude along the wage distribution (UPE2 estimates)



Note: standard errors are clustered by NUTS-3 region. Shadowed area report confidence intervals at 90% level. Estimates by employees' characteristics refer to the UPE2 specification.

Source: elaborations of the Authors on ICP 2013 and Inapp PLUS 2018 data

Figure A3. Unconditional effects of WFH attitude along the distribution of full-time open-ended employees



Notes: Standard errors are clustered by NUTS-3 region. Shadowed area report confidence intervals at 90% level.
 Source: elaborations of the Authors on ICP 2013 and Inapp PLUS 2018 data

References

- Adams-Prassl A., Boneva T., Golin M., Rauh C., (2020), *Inequality in the Impact of the Coronavirus Shock: Evidence from Real Time Surveys*, IZA Discussion Paper n.13183, Bonn, IZA
- Albanese A., Gallo G. (2020), Buy flexible, pay more. The role of temporary contracts on wage inequality, *Labour Economics*, article in press
- Albrecht J., Bjorklund A., Vroman S. (2003), Is there a glass ceiling in Sweden?, *Journal of Labor Economics*, 21, n.1, pp.145-177
- Alon T.M., Doepke M., Olmstead-Rumsey J., Tertilt M. (2020), *The impact of COVID-19 on gender equality*, NBER Working Paper n.26947, Cambridge MA, NBER
- Angelici M., Profeta P. (2020), *Smart-working. Work flexibility without constraints*, Dondena Working Paper n.137, Milano, Dondena Centre
- Arntz M., Sarra B.Y., Berlingieri F. (2019), *Working from Home. Heterogeneous Effects on Hours Worked and Wages*, ZEW - Centre for European Economic Research Discussion Paper n.19-015, Mannheim, ZEW <<https://bit.ly/2YgZ3J5>>
- Baert S., Lippens L., Moens E., Sterkens P., Weytjens J. (2020a), *How do we think the COVID-19 crisis will affect our careers (if any remain)?*, GLO Discussion Paper n.520, Essen, Global Labor Organization
- Baert S., Lippens L., Moens E., Sterkens P., Weytjens J. (2020b), *The COVID-19 crisis and telework. A research survey on experiences, expectations and hopes*, GLO Discussion Paper n.532, Essen, Global Labor Organization
- Baldwin R., Weder di Mauro B. (2020), *Economics in the Time of COVID-19*, eBook VoxEU, CEPR Press <<https://bit.ly/2NenFvO>>
- Barbieri T., Basso G., Scicchitano S. (2020), *Italian Workers at Risk during the COVID-19 Epidemic*, GLO Discussion Paper n.513, Essen, Global Labor Organization
- Béland L.P., Brodeur A., Wright T. (2020), *The ShortTerm Economic Consequences of COVID-19: Exposure to Disease, Remote Work and Government Response*, GLO Discussion Paper n.524, Essen, Global Labor Organization
- Biagetti M., Scicchitano S. (2011), A note on the gender wage gap among managerial positions using a counterfactual decomposition approach: sticky floor or glass ceiling?, *Applied Economics Letters*, 18, n.10, pp.939-943
- Biagetti M., Scicchitano S. (2014), Estimating the Gender Pay Gap in the Managerial and non Managerial Italian Labor Market, *Economics Bulletin*, 34, n.3, pp.1846-1856
- Blinder A.S., Krueger A.B. (2013), Alternative measures of offshorability: a survey approach, *Journal of Labor Economics*, 31, n.S1, pp.S97-S128
- Bloom N., Liang J., Robertsand J., Ying Z.J. (2015), Does working from home work? Evidence from a Chinese experiment, *The Quarterly Journal of Economics*, 130, n.1, pp.165-218
- Boeri T., Caiumi A., Paccagnella M. (2020), Mitigating the work-security trade-off, in CEPR, *Covid Economics. Vetted and Real-Time Papers*, issue 2, CEPR Press, pp.60-66
- Bonacini L., Gallo G., Patriarca F. (2020), *Drawing policy suggestions to fight Covid-19 from hardly reliable data. A machine-learning contribution on lockdowns analysis*, GLO Discussion Paper n.534, Essen, Global Labor Organization

- Choe C., Van Kerm P. (2018), Foreign Workers and the Wage Distribution. What Does the Influence Function Reveal?, *Econometrics*, 6, n.3, pp.1-26
- Clementi F., Giammatteo M. (2014), The labour market and the distribution of earnings. An empirical analysis for Italy, *International Review of Applied Economics*, 28, n.2, pp.154-180
- Civil Protection Department (2020), Repository of COVID-19 outbreak data for Italy, <<https://bit.ly/30ZhKCG>> accessed May 5 2020
- Delaporte I., Peña W. (2020), *Working From Home Under COVID-19. Who Is Affected? Evidence From Latin American and Caribbean Countries*, GLO Discussion Paper n.528, Essen, Global Labor Organization
- Di Nardo J., Fortin N., Lemieux T. (1996), Labour Market Institutions and the Distribution of wages 1973-1992. A Semiparametric Approach, *Econometrica*, 64, n.5, pp.1001-1024
- Dingel J.I., Neiman B. (2020), *How Many Jobs Can be Done at Home?*, NBER Working Paper n.26948, Cambridge MA, NBER
- Esposito P., Scicchitano S. (2020), Educational mismatches, technological change and unemployment: evidence from secondary and tertiary educated workers, GLO Discussion Paper n.465, Essen, Global Labor Organization
- Filippetti A., Guy F., Iammarino S. (2019), Regional disparities in the effect of training on employment, *Regional Studies*, 53, n.2, pp.217-230
- Firpo S. (2007), Efficient semiparametric estimation of quantile treatment effects, *Econometrica*, 75, n.1, pp.259-276
- Firpo S., Fortin N.M., Lemieux T. (2009), Unconditional quantile regressions, *Econometrica*, 77, n.3, pp.953-973
- Flaxman S., Mishra S., Gandy A., Unwin J., Coupland H., Mellan T., Zhu H., Berah T., Eaton J., Guzman P., Schmit N., Callizo L., Imperial College COVID-19 Response Team, Whittaker C., Winskill P., Xi X., Ghani A., Donnelly C., Riley S., Okell L., Vollmer M., Ferguson N., Bhatt S. (2020), Estimating the number of infections and the impact of non-pharmaceutical interventions on COVID-19 in European countries: technical description update, arXiv preprint <<https://bit.ly/2ChLJeQ>>
- Gallo G., Pagliacci F. (2020), Widening the gap. The influence of 'inner areas' on income inequality in Italy, *Economia Politica*, 37, pp.197-221
- Gariety B.S., Shaer S. (2007), Wage differentials associated with working at home, *Monthly Labor Review*, 130, pp.61-67
- Goldin C. (2010), How to achieve gender equality, *Milken Institute Review*, Q3, pp.24-33
- Gottlieb C., Jan G., Poschke M. (2020), Working from home across countries, in CEPR, *Covid Economics. Vetted and Real-Time Papers*, issue 8, CEPR Press, pp.70-91
- Hampel F.R. (1974), The influence curve and its role in robust estimation, *Journal of the American Statistical Association*, 69, n.346, pp.383-393
- Hensvik L., Le Barbanchon T., Rathelot R. (2020), *Which jobs are done from home? Evidence from the american time use survey*, IZA Discussion Papers n.13138, Bonn, IZA
- Holgersen H., Zhiyang J., Svenkerud S. (2020), *Who and How Many Can Work from Home? Evidence from Task Descriptions and Norwegian Job Advertisements*, Available at SSRN <<https://bit.ly/3hMYHBG>>
- Koren M., Peto R. (2020), Business disruptions from social distancing, in CEPR, *Covid Economics. Vetted and Real-Time Papers*, issue 2, CEPR Press, pp.13-31

- Leibovici F., Santacruce A.M., Famiglietti M. (2020), Social Distancing and Contact-Intensive Occupations, St. Louis Federal Reserve Bank - On the Economy Blog, March <<https://bit.ly/2YdpU8K>>
- Leonida L., Marra M., Scicchitano S., Giangreco A., Biagetti M. (2020), Estimating the wage premium to supervision for middle managers in different contexts: evidence from Germany and the UK, *Work, Employment & Society*, May 4, pp.1-23
- Leslie L.M., Manchester C.F., Park T.Y., Mehng S.A. (2012), Flexible work practices. A source of career premiums or penalties?, *Academy of Management Journal*, 55, n.6, pp.1407-1428
- Lucchese M., Pianta M. (2020), The Coming Coronavirus Crisis: What Can We Learn?, *Intereconomics*, 55, n.2, pp.98-104
- Meliciani V., Radicchia D. (2011), The informal recruitment channel and the quality of job-worker matches. An analysis on Italian survey data, *Industrial and Corporate Change*, 20, n.2, pp.511-554
- Meliciani V., Radicchia D. (2016), Informal networks, spatial mobility and overeducation in the Italian labour market, *Annals of Regional Science*, 56, n.2 pp.513-535
- Mongey S., Pilossoph L., Weinberg. A. (2020), *Which Workers Bear the Burden of Social Distancing Policies?*, NBER Working Paper n.27085, Cambridge MA, NBER
- Mussida C., Picchio M. (2014), The gender wage gap by education in Italy, *The Journal of Economic Inequality*, 12, n.1, pp.117-147
- Pabilonia S.W., Vernon V. (2020), *Telework and Time Use in the United States*, GLO Discussion Paper n.546, Essen, Global Labor Organization
- Picchio M., Mussida C. (2011), Gender wage gap. A semi-parametric approach with sample selection correction, *Labour Economics*, 18, n.5, pp.564-578
- Pigini C., Staffolani S. (2019), Teleworkers in Italy: who are they? Do they make more?, *International Journal of Manpower*, 40, n.2, pp.265-285
- Qiu Y., Chen X., Shi W. (2020), Impacts of social and economic factors on the transmission of coronavirus disease 2019 (COVID-19) in China, *Journal of Population Economics*, May 9, pp.1-46
- Rothe C., (2010), Nonparametric estimation of distributional policy effects, *Journal of Econometrics* 155, n.1, pp.56-70
- Scicchitano S. (2014), The gender wage gap among Spanish managers, *International Journal of Manpower*, 35, issue 3, pp.327-344
- Scicchitano S. (2012), The male-female pay gap across the managerial workforce in UK. A semi-parametric decomposition approach, *Applied Economics Letters*, 19, n.13, pp.1293-1297
- Scicchitano S., Biagetti M., Chirumbolo A. (2020) More insecure and less paid? The effect of perceived job insecurity on wage distribution, *Applied Economics*, 52, n.18, pp.1998-2013
- Van Wolleggem P.G., De Angelis M., Scicchitano S. (2019), *Education-occupation mismatch of migrants in the Italian labour market: the effect of social networks*, GLO Discussion Paper n.398, Essen, Global Labor Organization
- Yasenov V. (2020), *Who Can Work from Home?*, IZA Discussion Paper n.13197, Bonn, IZA
- Weeden K.A. (2005), Is there a flexiglass ceiling? Flexible work arrangements and wages in the United States, *Social Science Research*, 34, n.2, pp.454-482
- Zimmermann K.F., Karabulut G., Huseyin Bilgin M., Cansin Doker A. (2020), Inter-country Distancing, Globalization and the Coronavirus Pandemic, *The World Economy*, 43, n.6, pp.1484-1498