



13th

EUROPEAN
ANNUAL CONFERENCE
OF JEWISH
SOCIAL WELFARE

PARIS, FRANCE - NOVEMBER 17/19



INAPP

PUBLIC POLICY INNOVATION

Social agriculture: sustainable inclusion laboratory for people with disabilities

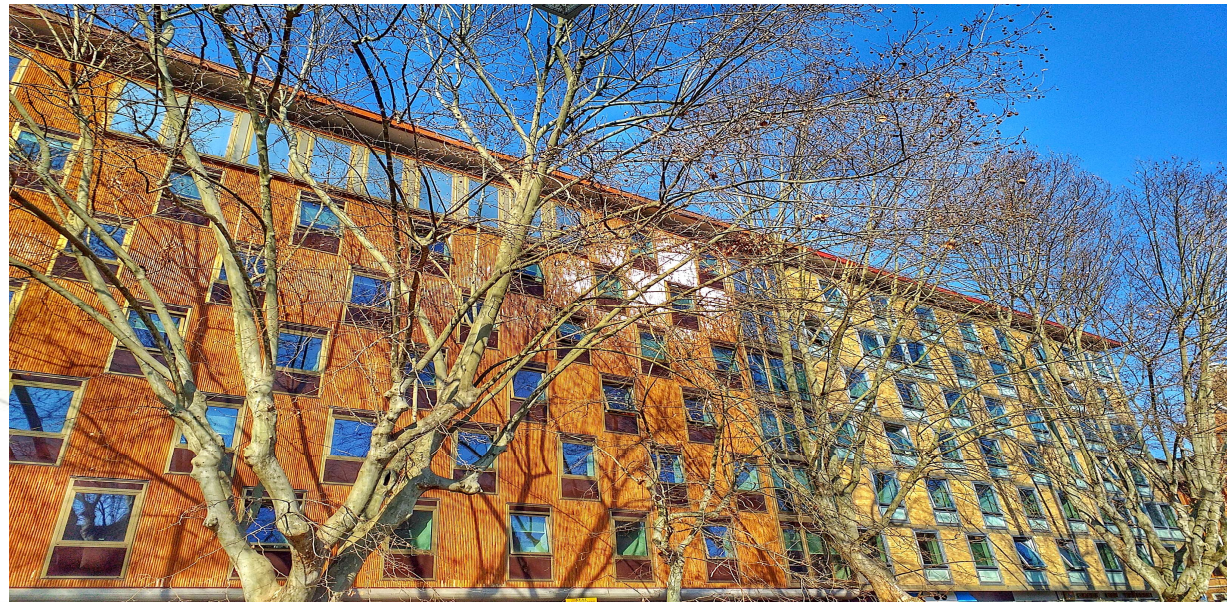
(Daniela Pavoncello)

Paris, 18th November 2019

- *School-Work Transition: proposals and paths for young people with disabilities in social agriculture (2014)*
- *Farming for health: social farming as an opportunity for social inclusion of persons with disabilities (2016-2018)*
- *Social agriculture and Autism spectrum disorders (2019)*

It carries out research, [strategic analysis](#), monitoring and evaluation of economic, social, employment, vocational training and education policies.

Inapp was set up on 1th December 2016, as a reshaping of the former Isfol (Institute for the development of vocational training for workers), founded in 1973.



ITALY'S NATIONAL INSTITUTE FOR PUBLIC POLICY ANALYSIS



Together with the Italian National Institute of Statistics (Istat), Inapp is the only National Research Institute delivering statistical information acknowledged by **Sistan** (National Statistical System), of which it is a member.

Inapp implements periodical international surveys for Italy, such as the **European Social Survey (ESS)** and the **Ocse-Piaac** Programme for the international assessment of adult competencies.





«Ensuring that no one is left behind»

Strategy Europe 2020

2030 Sustainable Development Agenda

New Skills Agenda for Europe (2016)

European Mental Health Action Plan 2013-2020

Biennial Action Programme for the promotion of rights and inclusion of people with disabilities (2016)

National Enterprise Action and Human Rights Plan(2016-2021)

A Society where a job that is not only perceived as a source of income, but a fundamental element of an inclusive society, fair and sustainable.

Agenda 2030 and Sustainable Development Goals

Established thereby, approved by the United Nations General Assembly in 2015, social and care farming is seen as a further evolution of previous agricultural models, apt at supporting sustainable development policies.

Social and care farming is defined as being well-established in the local communities, respectful of the environment and able to add value to the work performed, besides being able to establish a fruitful interaction between, on the one hand, the stakeholders involved in the production process and, on the other, a more conscientious and modern welfare system.

- Disability affects one out of six people in the European Union, around 80 million people who often do not have the opportunity to fully participate in social and economic life due to behavioural and environmental barriers
- Poverty rate for people with disabilities is 70% higher than average, partly due to limited access to employment
- More than a third of people over the age of 75 suffer from a partial disability and 20% suffer from a severe disability
- Around 750,000 people with disabilities in Italy are enrolled in the compulsory placement

These numbers are destined to increase as the EU's population ages!

RESEARCH



**«FARMING FOR
HEALTH: SOCIAL
FARMING AS AN
OPPORTUNITY FOR
SOCIAL INCLUSION
FOR PEOPLE WITH
DISABILITIES»**

Research Goals

(1) Define the role of social agriculture into the projects designed to improve the quality of life of people with disabilities, with a view to new principles of community welfare and generative and civilian economy.

(2) Outline the profile of social agriculture at national level identifying the most relevant characteristics, widespread practices, their principles and sustainability, their strengths and weaknesses in order to create a social and inclusive work, training and development of personal and professional skills of people with disabilities.



Italian Law (141/2015)

Promotes social farming, as an aspect of the multifunctionality of agricultural enterprises aimed at the development of social services, health care, socio-sanitary educational and socio-occupational placement intervention in order to facilitate plain and proper access to basic services granted to individuals, families and local communities throughout the country and especially in rural or disadvantaged areas.

ACTIVITIES - L. 141/2015 (ART. 2)



Performance social and service activities for local communities (55.4%)



Socio-labour insertion of workers with disabilities, disadvantaged workers and minors of working age (82.1%)

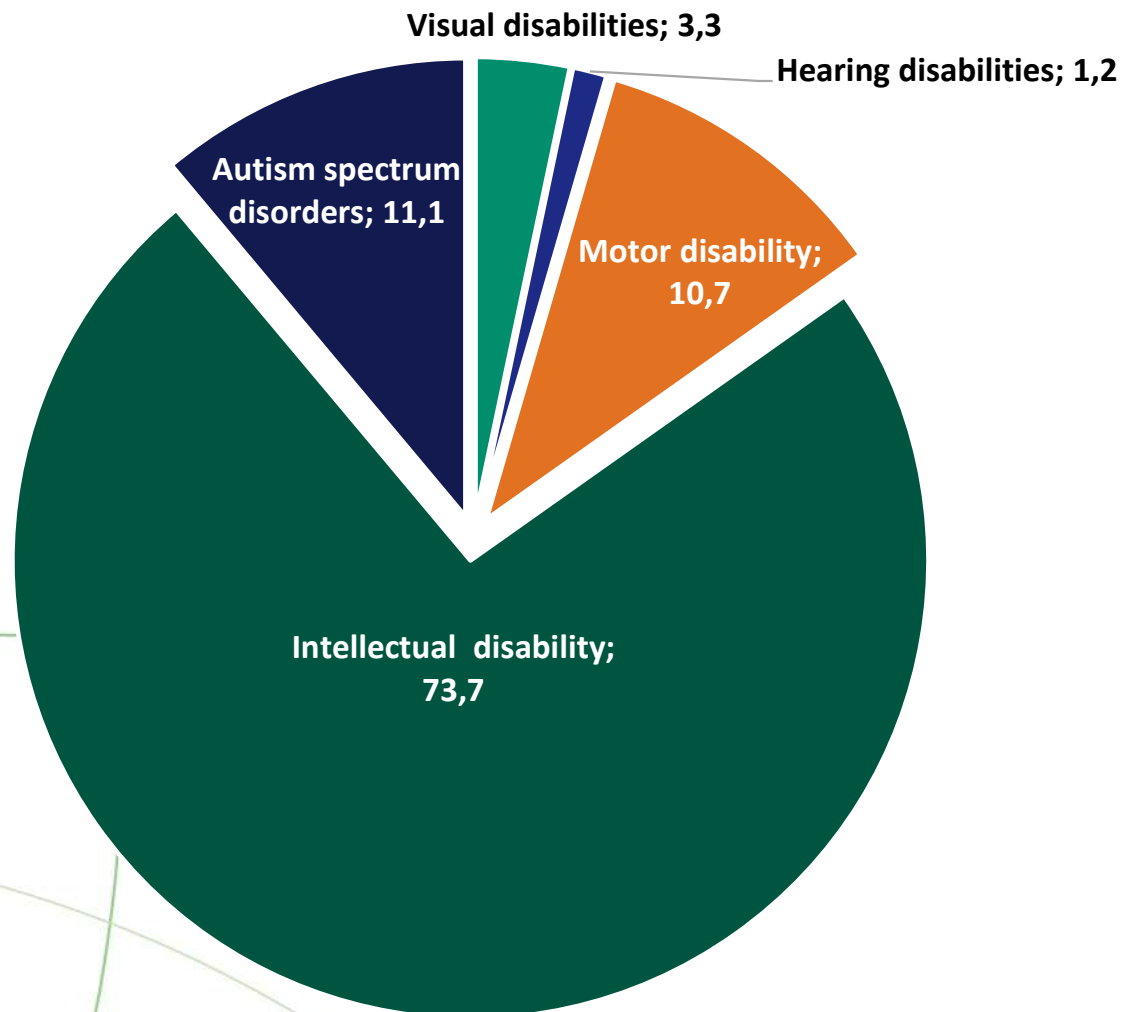
Projects aimed at environmental education and the preservation of biodiversity, and dissemination of knowledge of the area by organizing social and regional accredited educational farms (58.3%)



Benefits and services that support medical, psychological and rehabilitative therapies aimed at improving psychosocial conditions through the use of animals and plant cultivation (61.3%)



Disabilities typologies involved in social agriculture



Average annual number of people involved is 2039, of which 1503 have intellectual disabilities and 226 have autism spectrum disorders

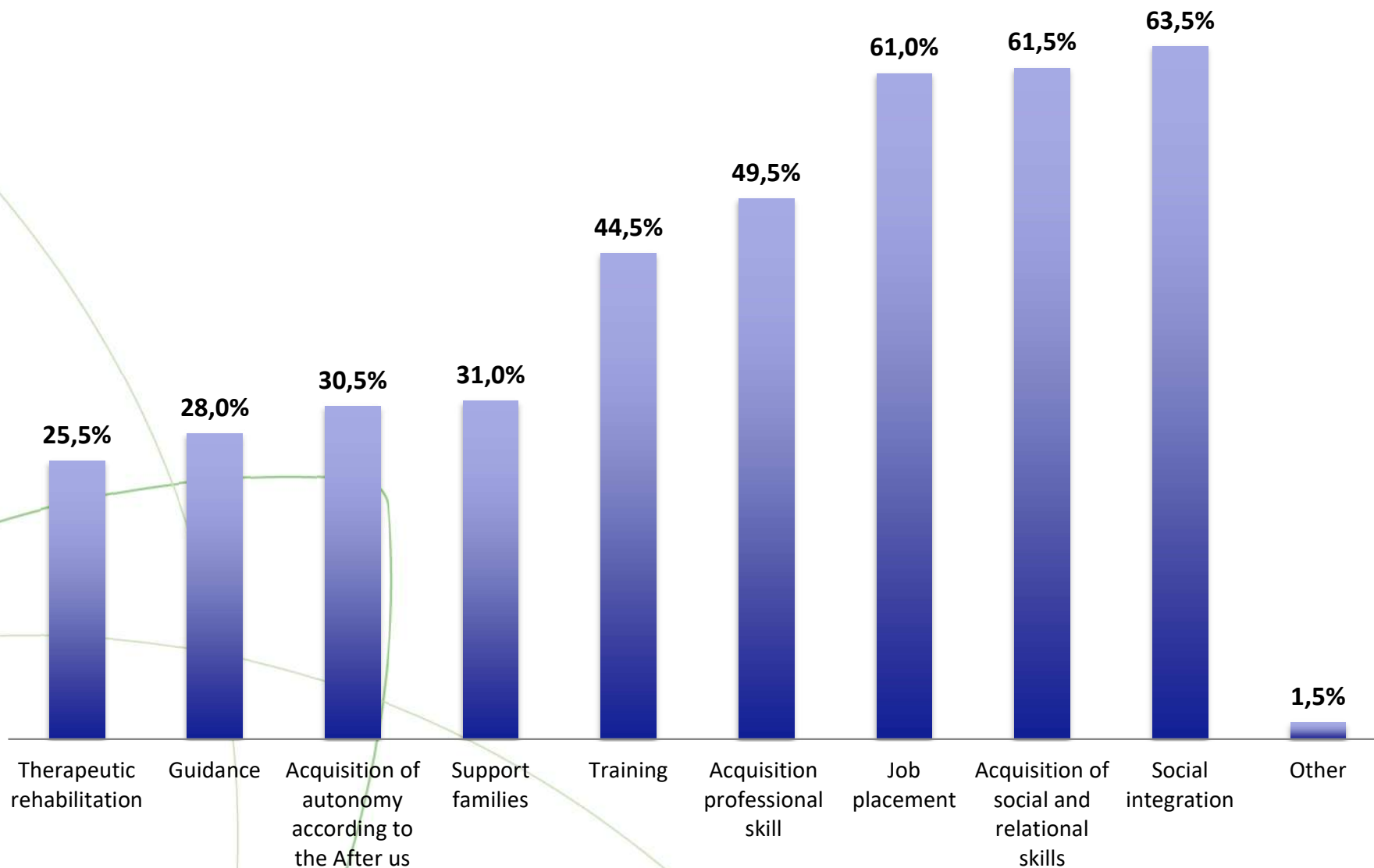
People with disabilities by age

Disability	v.a.	< 18	18-29	30-49	50-64	> 64
Visual disabilities	72	13,9%	23,6%	58,3%	4,2%	0,0%
Hearing disabilities	20	10,0%	50,0%	30,0%	10,0%	0,0%
Motor disability	218	21,6%	33,0%	31,2%	13,3%	0,9%
Intellectual disability	1.503	11,0%	40,6%	39,5%	8,2%	0,7%
Autism spectrum disorders	226	17,7%	65,5%	16,4%	0,4%	0,0%
TOTAL	2.039	13,0%	42,0%	36,6%	7,7%	0,6%

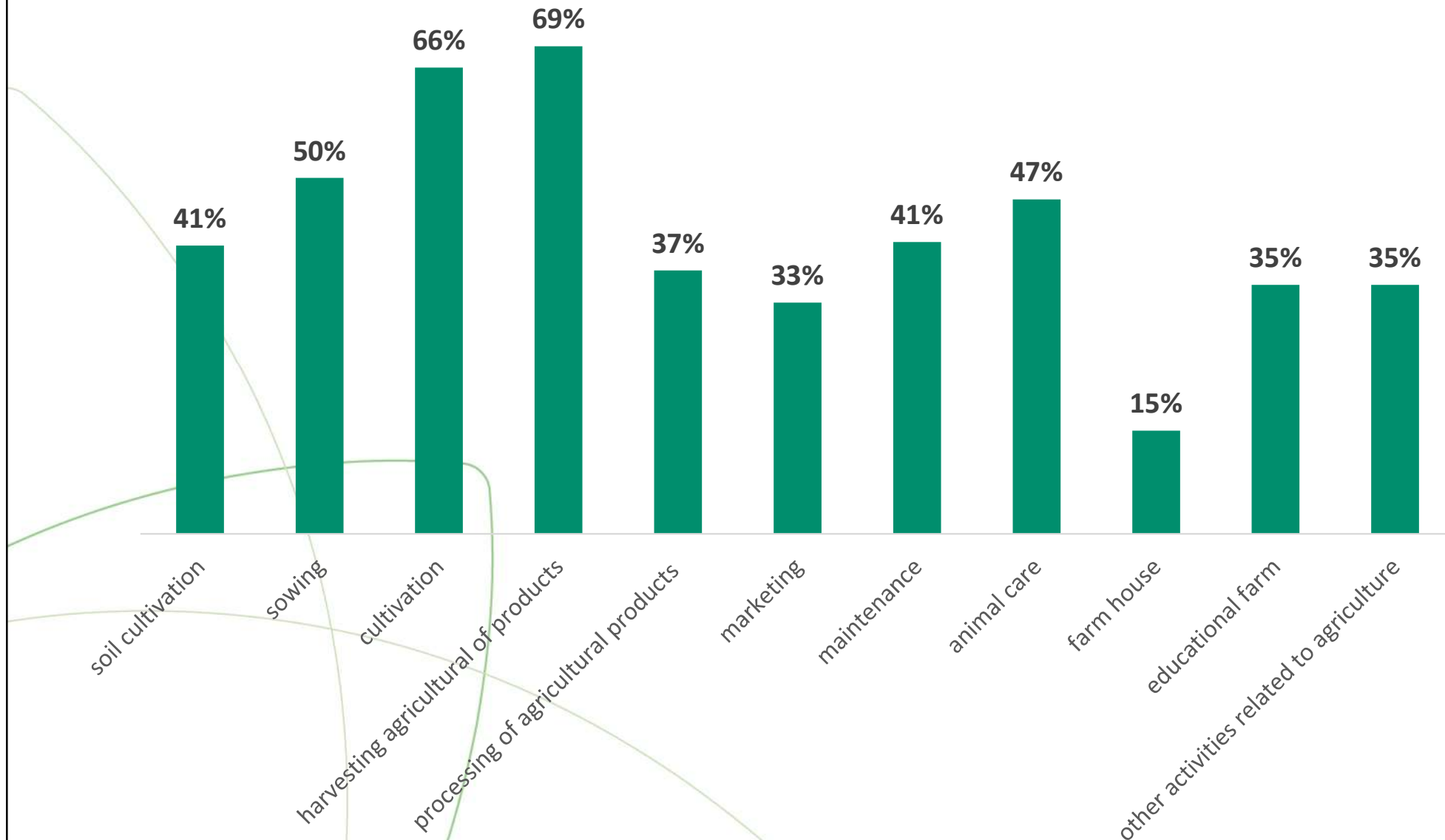
Target of disability and social farming purposes (%)

	N. QUESTIONNAIRES	SENSORY DISABILITY	MOTOR DISABILITY	INTELLECTIVE DISABILITY	AUTISM SPECTRUM DISORDERS
Work and social inclusion	178	3,6	8,5	76,8	11,1
Activities for local community	116	5,2	10,0	76,6	8,2
Co-therapeutic Performance	123	3,7	11,9	72,1	12,2
Projects aimed at environmental education and food	132	4,6	11,5	73,4	10,4

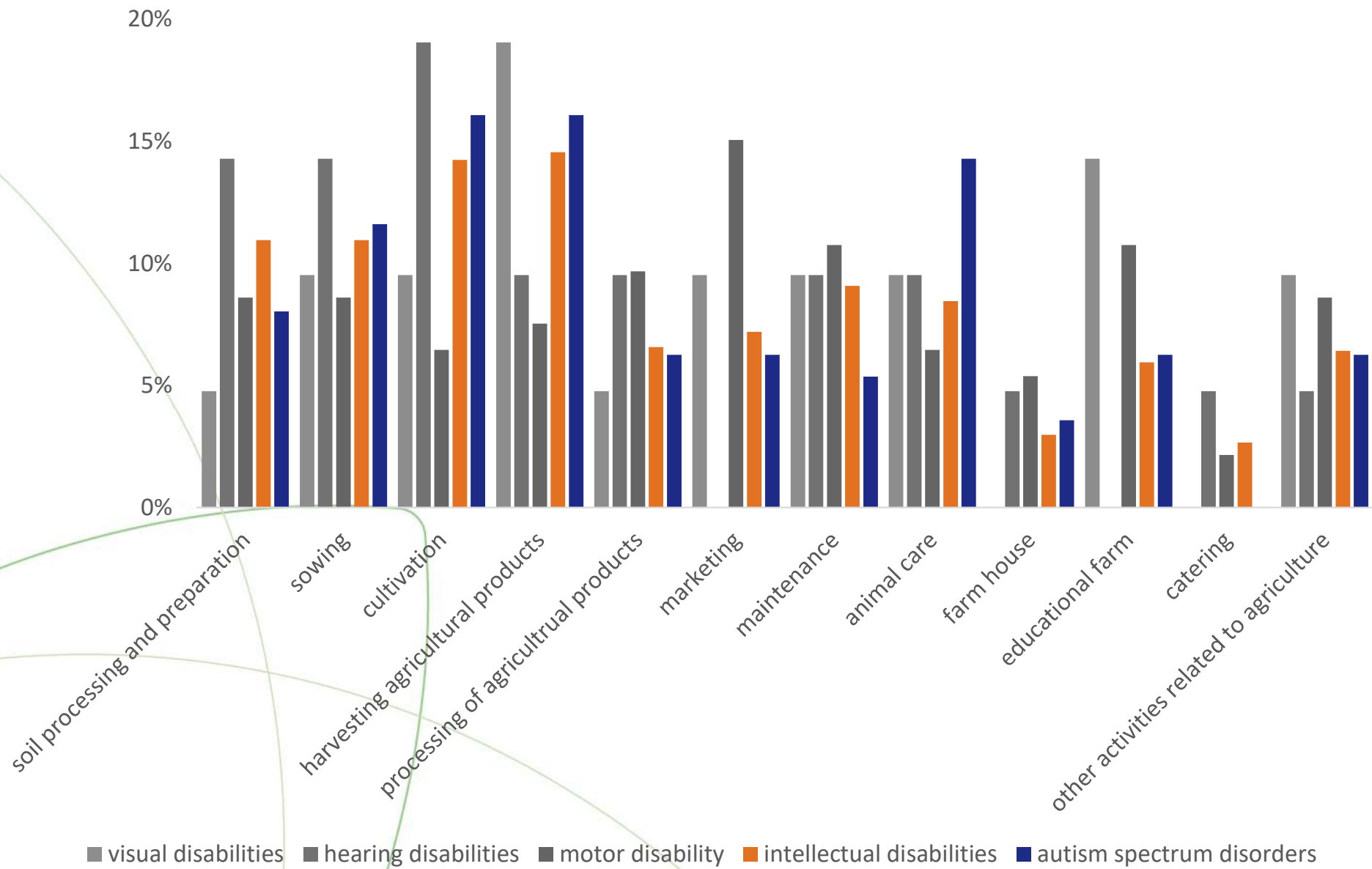
Purposes social farming activities for people with disabilities



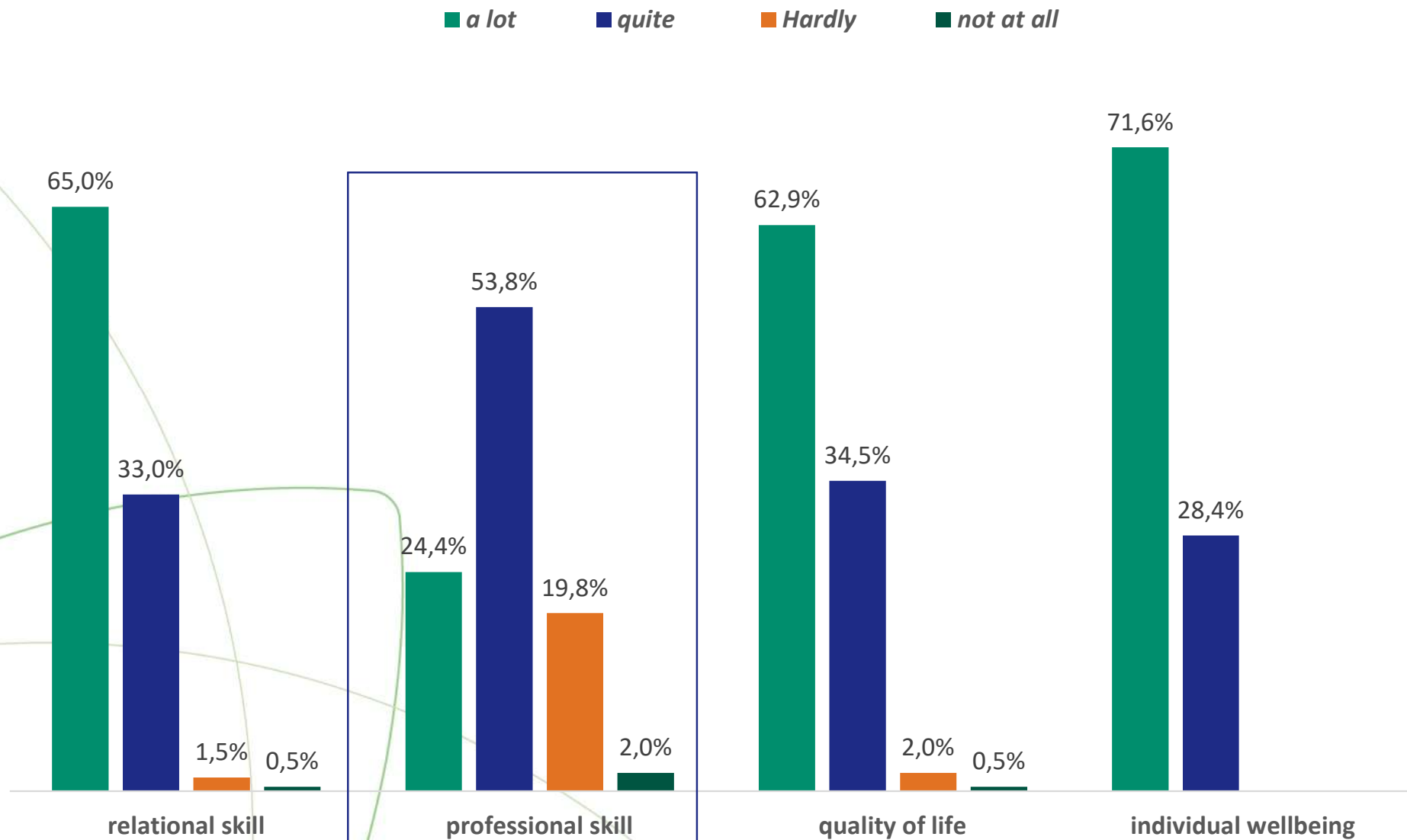
Activities provides a benefit to people with disabilities



More effective agricultural activities by type of disability

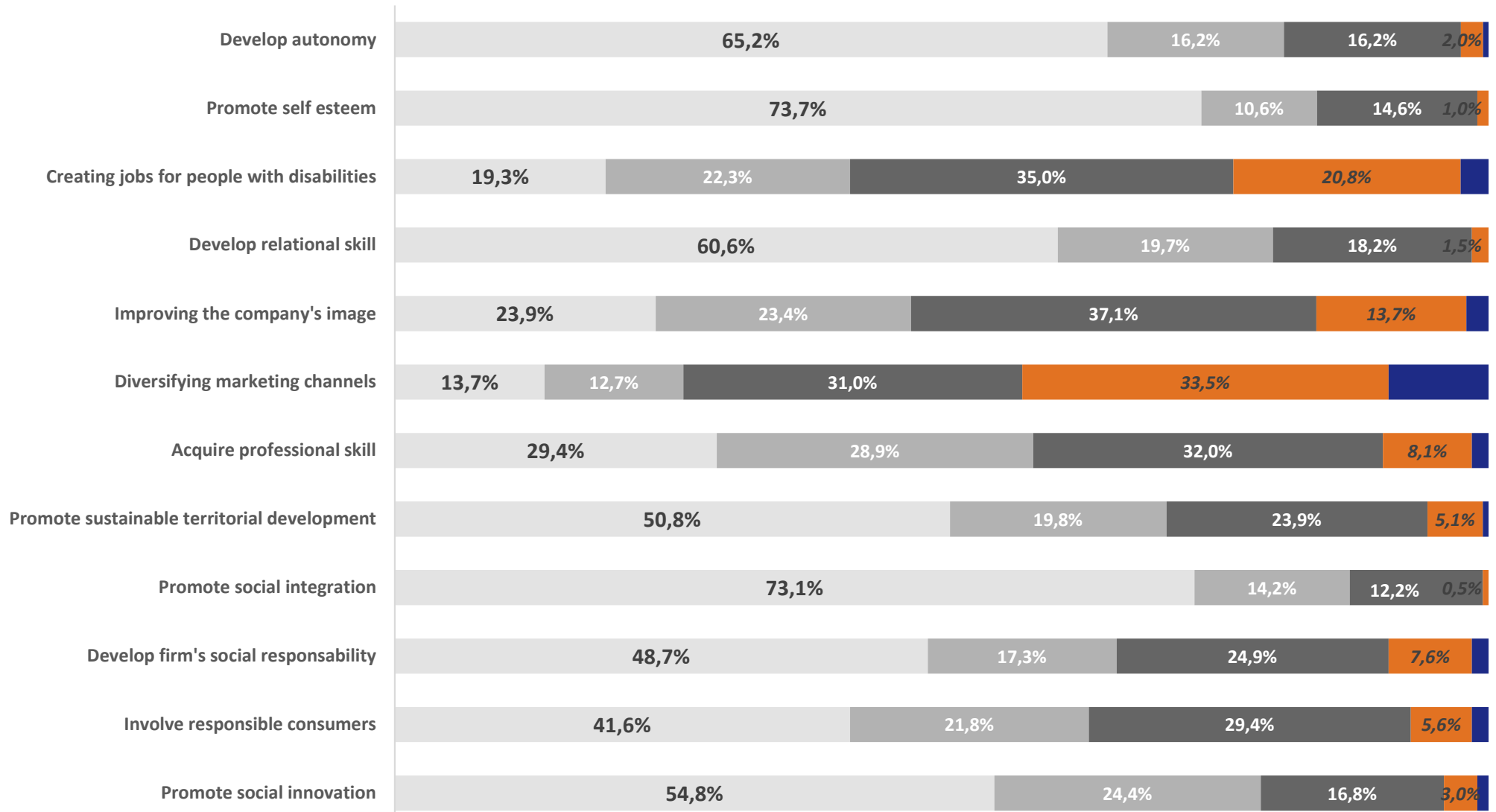


What Social Agriculture improve in people with disabilities



Agriculture social's activities contribute to:

■ Very Agree
 ■ Sufficiently Agree
 ■ Agree
 ■ Sufficiently Disagree
 ■ Disagree



BEST PRACTISE

The model provides a path to social inclusion through the construction of a professional project focused on the needs of each people with disabilities aimed at socializing in the workplace, permanent job placement and active participation in the socio-organizational contest.



- Agricoopecetto (Piemonte)
- Coop. Conca d'Oro (Veneto)
- La Semente (Umbria)
- Agricoltura Capodarco (Lazio)
- Le Agricole (Calabria)



AGRICOLTURA CAPODARCO

Site: Via del Grottino, 00046 Grottaferrata (Roma)

web site: www.agricolturacapodarco.it

Legal status: Social cooperative - Type B

Year of establishment: 1978

Surface area: 25 ha

Staff: 36 - 6 with disability

Average turnover: over a 1 million euro

AGRICOOPECETTO

Site: Strada Sabena 78, 10020 Pecetto Torinese (TO)

Sito web: www.Agricopecetto.it

Legal status: Farming cooperative

Year of establishment: 2010

Surface area: 4 ha

staff: 6, 3 with disability

Average turnover: between 100.000 euro and 250.000 euro





FATTORIA SOCIALE “CONCA D’ORO”
Site: Via Rivoltella Bassa, 20, 36061 Bassano del Grappa (VI)
Web site: www.concadoro.org
Legal status: Social cooperative

Year of establishment: 1999

Surface area 11 ha

Staff: 29, more 36 people with disabilities involved, 10 members, 2 with disability

Average turnover: over 1 million euro

LA SEMENTE

Site: Traversa Limiti, 06038 Limiti, Spello (PG)

Web site: www.lasemente.it

Legal status: Social agriculture cooperative

Year of establishment: 2011

Surface area : 4 ha

Staff: 17, 2 with disability, 2 voluntaries members

Average turnover: between from 50 .000 euro and 100.000 euro



LE AGRICOLE

Sede: Via dei Salentini 9, 88046 Lamezia Terme (CZ)

Sito web: www.coopleagricole.blogspot.it

Forma giuridica: cooperativa sociale di tipo B



Year of establishment: 2008
Surface area: 3 ha
Staff: 10 - 2 volunteer members with disabilities
Average turnover: between 8.000 and 25.000 euro

"We are women: entrepreneurs, professionals or housewives; Roma and non-Roma ethnic groups; some with disabilities or social fragility.

Women who want to create a job: so we set up the Social Cooperative "Le Agricole".

CONCLUSIONS

Added value of social agriculture for people with disabilities

A tool to provide for the growing needs of the population in terms of education, sustainable agricultural production, from a social, economic and environmental point of view, and in terms of social and health services and business partner

Puts "in field" new values (learning by doing) and new models of intervention to support the achievement of full dignity of disabled people as enshrined in the UN Convention on disability

Allows sharing of professional experience between disabled and able people, in terms of mutual individual and collective human and professional growth

Added value of social agriculture for people with disabilities

Promote cross-territorial networking across multiple actors and sectors which guarantee the sustainability of the project

Develop a community of social innovation based on values of sharing, hospitality, solidarity

Stimulate the change of a paradigmatic model of the concept of disability: exceed the model of welfare in support of the promotion of human rights and respect of the individual

A farmer, whose grain always won the first prize at the regional fair, he used to divide the better seeds with all farmers in the neighborhood.

When asked why, he replied: "The wind raises the pollen and transports it from one field to another, so if my neighbors cultivated a lower quality wheat pollination crusade would impoverish the quality of my crop. That's why I care that they only plant seeds best. " Everything that we give to others we give to ourselves".

(Anthony De Mello, The prayer of the frog)

The book is available:

<http://oa.inapp.org/xmlui/handle/123456789/229>

Pavoncello D. et al. (a cura di) ***Agricoltura sociale: Un laboratorio di inclusione sociale per le persone con disabilità***, Roma, Ministero del lavoro e politiche sociali e INAPP 2018

Bibliography

- American Psychiatric Association. *Diagnostic and statistical manual of mental disorders, 5th Edition (DSM-5)*. American Psychiatric Pub: 2013
- Berti E., Comunello F. (2013), *Fattoria sociale: Un contesto competente di sostegno oltre la scuola*, Trento, Erickson
- Braastad B. O., et al. "COST Action 866 "Green Care in Agriculture"—a multi-disciplinary scientific network." *Green care in agriculture: Health effects, economics and policies* (2007): 13-24
- Bronfenbrenner U. (1986), *Ecologia dello sviluppo umano*, Bologna, Il Mulino,
- Canevaro A. (2012), *Cura/educazione dalla dimensione del rapporto a due al sostegno competente, diventando adulti: Innovare integrando e integrare innovando*, www.eraldoberti.it
- Carbone A., Gaito M. and Senni S. "Consumer attitudes toward ethical food: Evidence from social farming in Italy." *Journal of Food Products Marketing* 15.3 (2009): 337-350.
- Comunello F. (2018), *Un mondo possibile. La disabilità generativa:dall'esperienza della fattoria sociale*, Erickson, Trento
- Crea – Centro Politiche e Bioeconomia (2018), *Rapporto sull'agricoltura sociale in Italia*, Rete Rurale nazionale, Roma
- Di Iacovo F., Senni S., and de Knecht J.. "Farming for health in Italy." *Farming for Health*. Springer, Dordrecht, 2006. 289-308
- Di Iacovo F., O'Connor D. (2009), *Supporting policies for Social Farming in Europe: Progressing multifunctionality in responsive rural areas*, Florence, ARSIA
- Giarè F. (a cura di) (2013), *Coltivare salute: Agricoltura Sociale e nuove ipotesi di welfare*, Roma, INEA
- Hassink J., Hulsink W., Grin J. (2016), Entrepreneurship in agriculture and healthcare: Different entry strategies of care farmers, *Journal of Rural Studies*, 43, pp. 27-39
- Hendricks, D. (2010), Employment and adults with autism spectrum disorders: Challenges and strategies for success. *Journal of Vocational Rehabilitation*, 32(2), 125-134.
- Ianes D., Cramerotti S. (a cura di), (2009), *Il Piano educativo individualizzato: Progetto di vita*, Trento, Erikson
- OMS, *Policies and practices for mental health in Europe – meeting the challenges*. Copenhagen, Ufficio Regionale per l'Europa dell'OMS, 2008
- Pavoncello D., Spagnolo A. (2015), *Agricoltura sociale: un'opportunità per la transizione scuola-lavoro dei giovani con disabilità psichica: Esempi di buone pratiche, contributo presentato in occasione dell'EXPO a Milano o*, 21 settembre 2015
- Perrins-Margalis N. et al. (2008), The Immediate Effects of a Group-Based Horticulture Experience on the Quality of Life of Persons with Chronic Mental Illness, *Occupational Therapy in Mental Health*, 16, n.1,
- Senni S. (2005b), *L'Agricoltura sociale tra impresa e comunità locale, I servizi sociali nelle aree rurali*, Roma, INEA
- Shakespeare T. (2017), *Disabilità e società*, Trento, Erickson
- Soresi S. (a cura di) (2016), *Psicologia delle disabilità e dell'inclusione*, Bologna, Il Mulino
- Thomas J., Chapman S.M. (2013), TEACCH Transition Assessment Profile (TTAP), in Volkmar F.R. (ed.) *Encyclopedia of Autism Spectrum Disorders*, New York, Springer, pp. 3069-3072
- Wehmeyer M.L., (2013), *Handbook of positive psychology and disability*, Oxford University Press, Oxford UK

THANK YOU FOR YOUR ATTENTION!!!!



INAPP - Istituto Nazionale per l'Analisi delle Politiche Pubbliche
Corso d'Italia, 33 - 00198 Roma - tel. +39.06.85447.1 - www.inapp.org